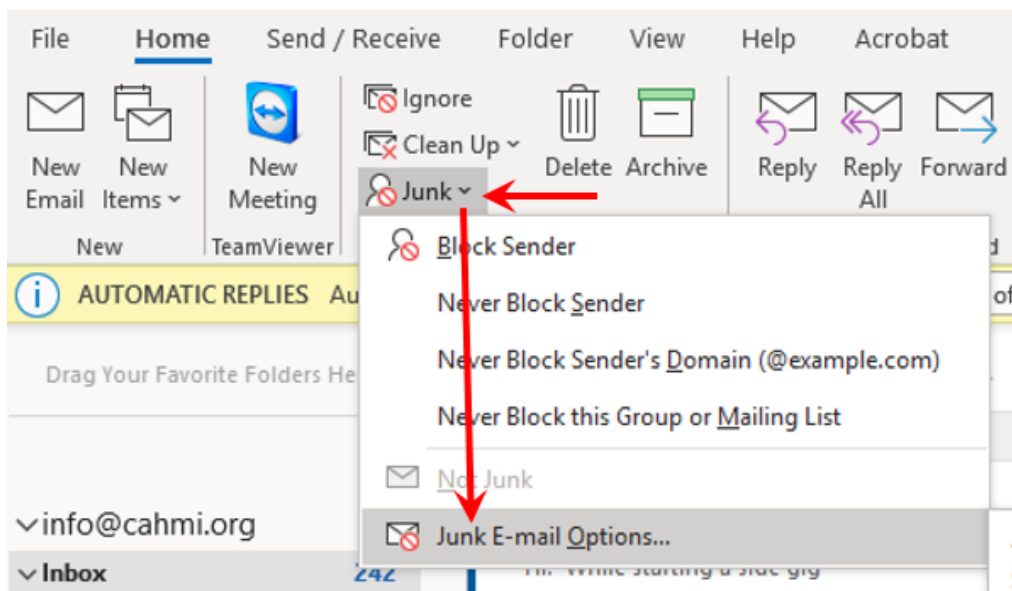


## Welcome to the Child and Adolescent Health Measurement Initiative's Cycle of Engagement (COE) Registration!



**The key to registration success:** Please follow one or more steps below to be able to verify your email successfully before get started.

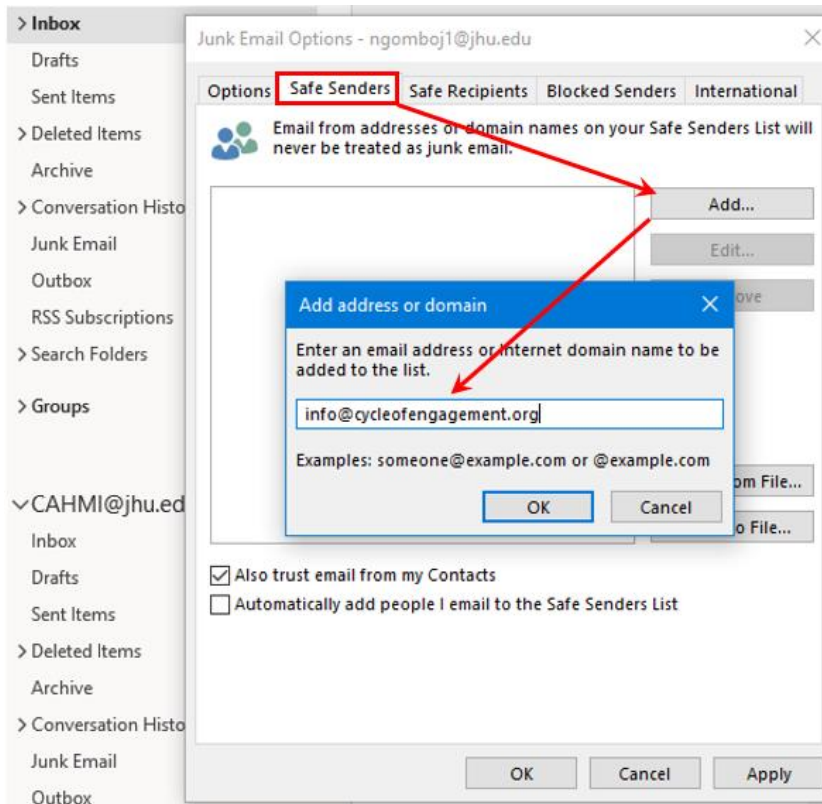
1. **Add [info@cycleofengagement.org](mailto:info@cycleofengagement.org) to safe senders list.** Please follow the instructions below if you are using Microsoft Outlook.
  - a) On the **Home** tab, click **Junk**, and then click **Junk E-mail Options**.



- b) In **Junk E-mail Options** dialog, click the **Safe Senders** tab, and then click the **Add** button.
- c) In the popped out **Add address or domain** box, enter [info@cycleofengagement.org](mailto:info@cycleofengagement.org), and then click **OK**.

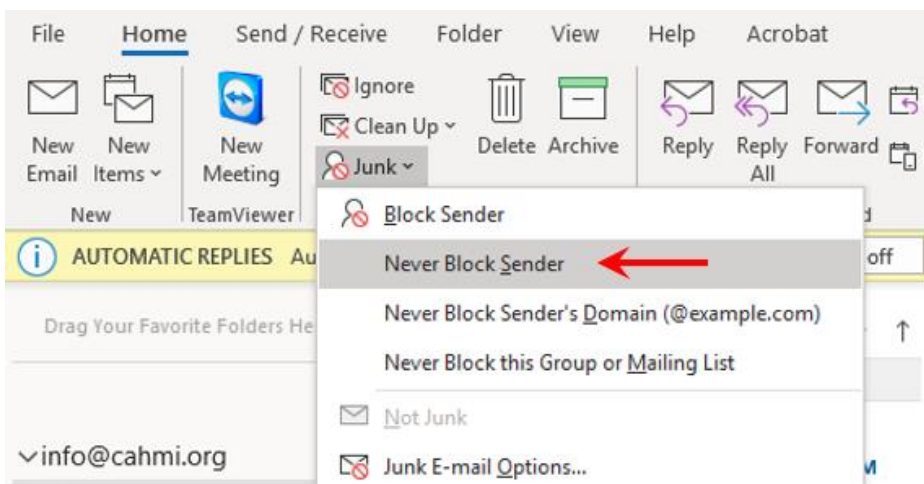
You may check **Also trust e-mail from my Contacts** option to consider the email address safe sender in the **Contacts**.

- d) Then click the **OK** button in the Junk Email Options dialog box.



2. How to add [info@cycleofengagement.org](mailto:info@cycleofengagement.org) to safe senders list If you previously received an email from us?

Select the message you received from us and click **Home > Junk > Never Block Sender**.



3. Add [info@cycleofengagement.org](mailto:info@cycleofengagement.org) in your contacts list. If you received an email from us previously, right click on [info@cycleofengagement.org](mailto:info@cycleofengagement.org) in the email and add the email address to your contacts list.
4. If you are not sure how to add the email in your contacts list or safe senders list, please **send an email to** [info@cycleofengagement.org](mailto:info@cycleofengagement.org) letting us know your interest in using the CAHMI's COE model and tools. We will respond to your email with instructions within 2 business days.

