

State leaders seeking ways to ensure the array of state early childhood systems are doing what is needed to improve population outcomes is an endeavor. Starting early in a child’s health and wellness trajectory can have immediate and long-term positive impacts. But what framework best supports these efforts? The **Engagement In Action (EnAct!) Framework** is a statewide integrated early childhood health system tool that optimizes the power of engaging families to change the life-course path using prevention and early intervention as a priority.

*Half of young children in the United States experience complex social, relational and/or medical health risks, fewer than half meet criteria for being ready for school or receive recommended well child prevention services in the first months and years of life, 65% fail to receive even basic early developmental screens and large gaps exist in the utilization of essential primary care health promotion and prevention services and other early childhood programs and supports.*

## What is EnAct! - ?

A national model focused on translating the science of healthy development by scaling strategies, innovations, and policies to equitably promote:

- Child flourishing and resilience
- School readiness
- Family resilience
- Positive childhood experiences (PCEs)
- Reduction and mitigation of the impacts of adverse childhood experiences (ACEs)

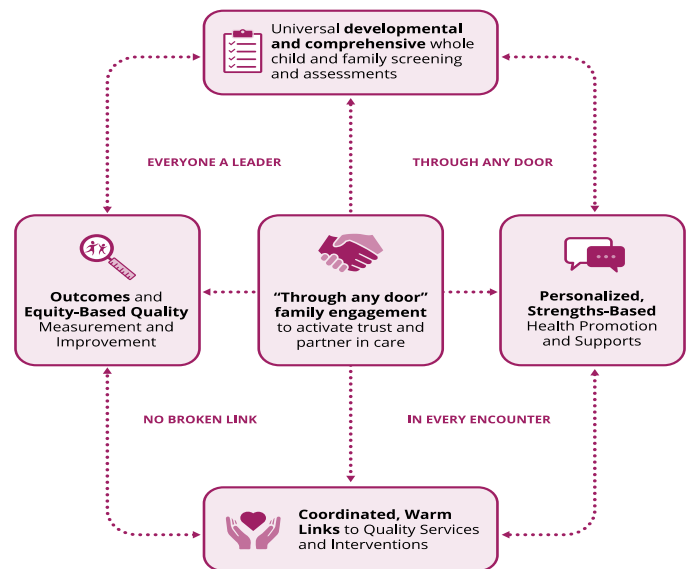
Using the following tools:

- A through any door, two generation approach.
- Closing gaps in the utilization, quality and equity of covered well child health promotion and preventive services for young children.
- Family centered and personalized whole child and family assessments aligned with Bright Futures Guidelines.
- Interoperable data sharing leveraging digital health innovations that activate families and make time to build trusting relationships and coordinate care while meeting quality of care standards.
- Scaling evidence-based health promotion interventions.
- In full alignment with national Bright Futures Guidelines, healthcare and state early childhood systems’ goals, performance standards, payment innovations, data requirements and evidence-based strategies.

Figure 1: Engagement In Action Framework (EnAct!) Purpose, Goals, Approach

### Framework Goals:

1. **All In:** Universal provision of comprehensive, personalized, whole child and family preventive and developmental services.
2. **Real Engagement:** Families are engaged to access and ensure services are personalized to their own goals and needs to shape improvements in practice, policy and the system of care.
3. **Seamless System:** All early childhood systems intentionally collaborate to optimize early screening, address social and relationship health needs and promote well-being.



Source: Child and Adolescent Health Measurement Initiative, Feb. 2023

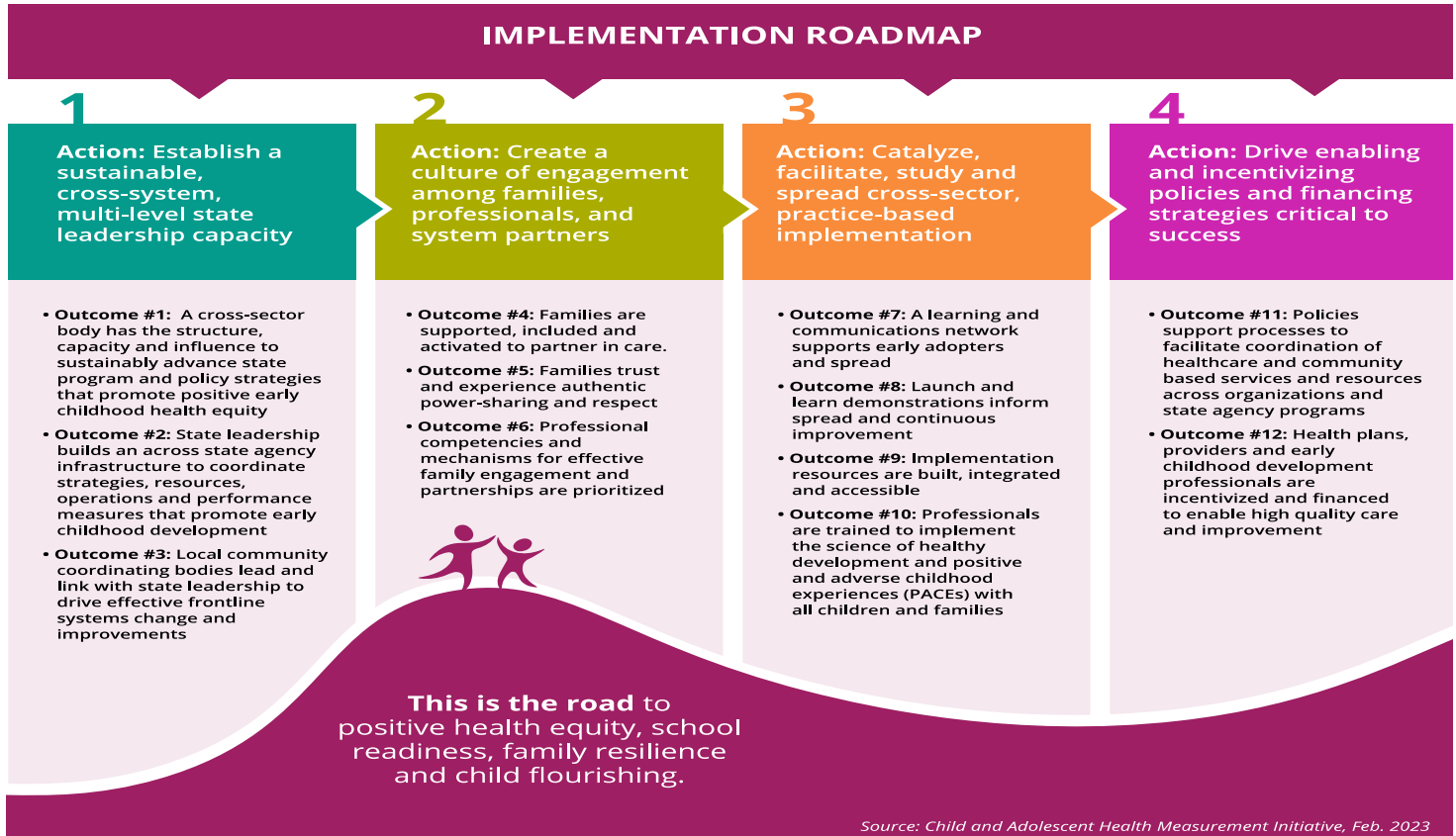
**Why Use EnAct! - ?** Despite widespread awareness about the urgency and possibilities to improve the healthy development of young children, unacceptable inequities, poor outcomes and performance gaps still exist. EnAct! provides an actionable roadmap and key action steps supported by a:

- [Summary of data](#) to set priorities,
- [Policy playbook](#) with levers,
- Summary of [methods](#) to jump start collaboration,
- Partner shared performance measure [analysis](#),
- [Possibility Prototypes](#). Illustrating how the *any door* approach can support success across 10 early childhood partners.

# How Does EnAct! Implementation Drive Change?

Implementation is always a challenge especially for busy state leaders trying to address multiple and competing needs of the population they are responsible for and to. This implementation roadmap provides four key actions to move the system of health care and early childhood towards systemic improvements and ensure outcomes are achieved.

Figure 2: The Engagement In Action Implementation Roadmap (see full report for data, methods, partners landscape, policy levers and possibility prototypes)



By leveraging strengths and existing federal, state and community programs and infrastructure, states are well poised to catalyze positive health equity through transformational partnerships across systems and in full partnership with families and communities. The decades of research, advocacy and systems change work led by a countless army of individuals and organizations enable us to meet this moment of opportunity for generations to come if we prioritize the possibilities. The EnAct! Framework is offered to accelerate progress by bolstering and building the capacity of families, communities, children's health care and all early childhood systems to partner in this work to measurably improve the well-being of all children and families and give the professionals that serve them the tools to be successful with their work.

## What Can Your State Do?

- ✓ Adopt this framework through incenting MCOs and other providers using existing and new payment associated quality measures ensuring Bright Futures Guidelines are met.
- ✓ Build collaborative infrastructure across state programs and contract with an early childhood systems leader to coordinate collaborative implementation across early childhood systems.
- ✓ Use the framework to inform and design necessary early childhood system improvements.



Learn more [here](#).

Citation: Child and Adolescent Health Measurement Initiative, [Two Page Summary of the Engagement In Action Framework](#), April, 2023

Acknowledgement: A Health Resources & Services Administration, U.S. Department of Health & Human Services Cooperative Agreement (#UK2MC31456) to the University of Mississippi Medical Center' funded the Mississippi Thrive! Child Health and Development Project through which the EnAct! framework was created with the CAHMI.