

State leaders seeking ways to ensure the early childhood health systems are doing what is needed to improve population outcomes face many challenges. While starting early in a child's health and wellness trajectory can have immediate and long-term positive impacts, most states have yet to create the integrated system required. But what framework best supports these efforts? The **Engagement In Action (EnAct!) Framework** is a statewide integrated early childhood health system tool that optimizes the power of engaging families to change the life-course path using prevention and early intervention as a priority.

Over half of young children in the United States experience complex and interrelated social, relational and/or medical health risks, only 40% meet criteria for being ready for school, 65% fail to receive even basic early developmental screens and large gaps exist in the utilization of essential well child care preventive and developmental services

What is EnAct! - ?

A national model focused on translating the science of healthy development by scaling strategies, innovations, and policies to promote:

- Child flourishing
- School readiness
- Family resilience
- Foster positive childhood experiences (PCEs)
- Prevent and mitigate the impacts of adverse childhood experiences (ACEs)

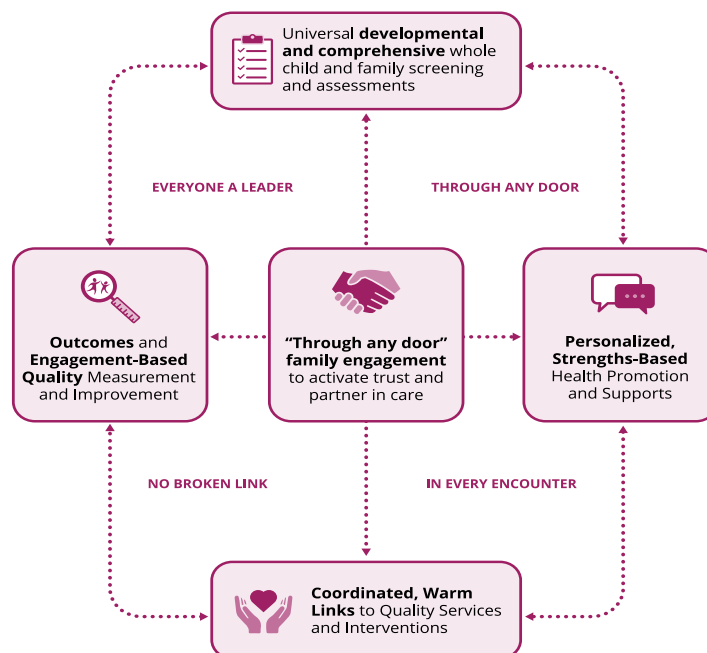
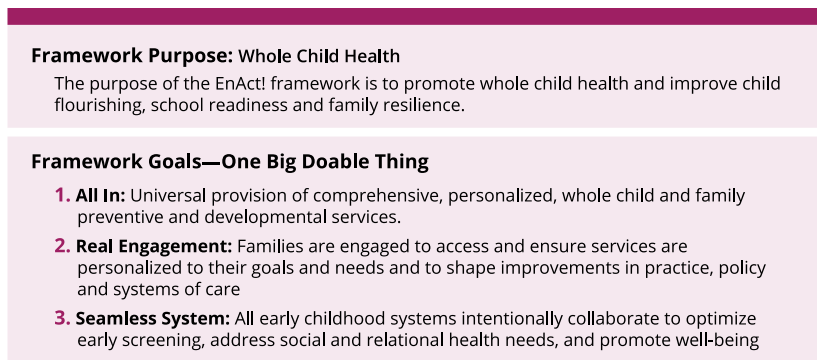
Through the use of the following tools:

- Through any door family engagement
- Integrated whole child and family assessment
- Data sharing and transparency
- Health promotion interventions
- Driving collaboration across health care, early childhood systems and community partners
- Closing gaps in the utilization and quality of screenings for children aged 0-5.
- Aligned with national Bright Futures Guidelines, healthcare and state early childhood systems' goals, performance standards, payment innovations, data requirements and evidence-based strategies.

Why Use EnAct! - ? Despite widespread awareness about the urgency and possibilities to improve the healthy development of young children, poor outcomes and performance gaps still exist. This provides an actionable roadmap with key action steps including a:

- Mississippi [State Illustration](#)
- [Summary of data](#) to set priorities,
- [Policy playbook](#) with levers,
- Summary of [methods](#) to jump start collaboration,
- Partner and performance measure [analysis](#),
- [Possibility Prototypes](#). Illustrating how the *any door* approach can support success through shared accountability.

Figure 1: Engagement In Action (EnAct!) Framework Purpose, Goals, Approach

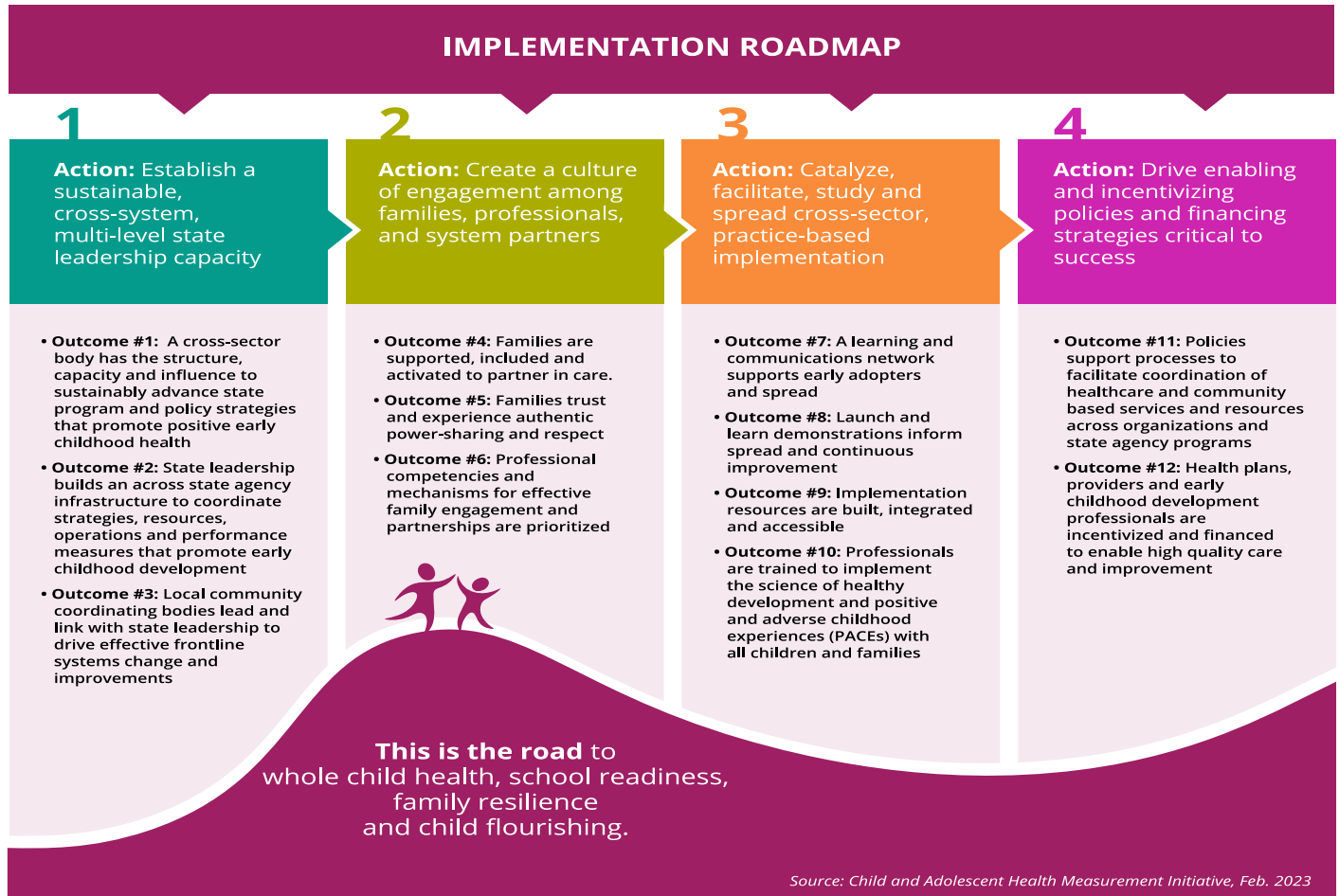


Source: Child and Adolescent Health Measurement Initiative, Feb. 2023

How Does EnAct! Implementation Drive Change?

Implementation is always a challenge especially for busy state leaders trying to address multiple and competing needs of the population they are responsible for and to. This implementation roadmap provides four key actions leveraging existing state structures to move the system towards systemic improvements and ensure outcomes are achieved.

Figure 2: The Engagement In Action Implementation Roadmap (see full report for data, methods, partners landscape, policy levers and possibility prototypes)



By leveraging strengths and existing federal, state and community programs and infrastructure, states are well poised to promote whole child health through transformational partnerships across systems and in full partnership with families and communities. The decades of research, advocacy and systems change work led by a countless army of individuals and organizations enable us to meet this moment of opportunity for generations to come if we prioritize the possibilities. The EnAct! Framework is offered to accelerate progress by bolstering and building the capacity of families, communities, children's health care and all early childhood systems to partner in this work to measurably improve the well-being of all children and families and give the professionals that serve them the tools to be successful with their work.

What Can Your State Do?

- ✓ Adopt this framework through incenting MCOs or other providers by either indicating screenings are a quality measure or creating a quality payment associated with increased screenings.
- ✓ Contract with an early childhood leader to implement and to build an understanding and demand for the framework.
- ✓ Use the framework to design necessary early childhood system improvements.



Citation: Child and Adolescent Health Measurement Initiative, [Two Page Summary of the Engagement In Action Framework](#), April, 2023

Acknowledgement: A Health Resources & Services Administration, U.S. Department of Health & Human Services Cooperative Agreement (#UK2MC31456) to the University of Mississippi Medical Center' funded the Mississippi Thrive! Child Health and Development Project through which the EnAct! framework was created with the CAHMI also with support from the Robert Wood Johnson Foundation.

Learn more [here](#).