



Overview of the **ENGAGEMENT IN ACTION (EnACT!) FRAMEWORK**

Toward an Integrated Early Childhood Health System to Promote the Early and Lifelong Health of Children and Families

May 2023

Abstract: The Health Resources and Services Administration's Maternal and Child Health Bureau, Division of Home Visiting and Early Childhood Systems funded the 2017-2023 Mississippi Thrive! Child Health and Development Project (MST). After foundational work and progress, in 2022-2023 MST collaborated with the Child and Adolescent Health Measurement Initiative to facilitate, conduct research and develop an integrated early childhood developmental health system across the state to serve as a national model to help all children and families thrive. This overview summarizes the integrated health system framework to further action to promote positive health for all children and families.

Citation: Christina Bethell, PhD, MBA, MPH, Susan Buttross, MD, Jeff Schiff, MD, David Bergman, MD, Heather Hanna, PhD, Shoshana Oppenheim, MPH, Melissa Bailey, MA, LPC, Ruth Patterson, MD, Barabara Leach, Nadeane Cattrell. (May 2023). *The Engagement In Action Framework: Toward an integrated early childhood health system to promote the early and lifelong health of all children and families*. Child and Adolescent Health Measurement Initiative, Johns Hopkins Bloomberg School of Public Health, Baltimore, Maryland. Available at: <https://www.cahmi.org/docs/default-source/ms-enact-documents/enact!-framework-overview->

Disclaimer: The Child Health & Development Project: Mississippi Thrive! was funded through a Cooperative Agreement grant (#UK2MC31456) from the Health Resources & Services Administration (HRSA) of the U.S. Department of Health & Human Services (HHS) to the University of Mississippi Medical Center's Center for the Advancement of Youth (UMMC CAY). Additional funding to the Child and Adolescent Health Measurement Initiative was provided by the Robert Wood Johnson Foundation (#79164). The contents are those of the authors and do not necessarily represent the official views nor an endorsement of HRSA, HHS, or the U.S. Government or of RWJF.

Foreword

Building Relational Systems of Care to Achieve Positive Health for All Children and Families

Transformational relationships are at the heart of systems change, just as nurturing relationships in families and communities are the foundation of healthy child development and flourishing. These fundamental, evidence-based truths have emerged center stage in the national landscape, sparking state and local partnerships and policies to advance high-quality integrated early childhood health systems. Such systems seek to promote the health of the whole child and family, build on strengths and address family priorities to create the safe, stable and nurturing relationships and environments all children need to thrive. The Engagement In Action (EnAct!) Framework summarized in this report leverages the science, available data, existing system assets and policies and evidence-based innovations to catalyze and power the essential partnerships and approaches needed to achieve these goals for all children in Mississippi.

Serving as a national model, the EnAct! framework builds on the foundation of our growing understanding about the developmental origins of early and lifelong health and impacts of both positive childhood experiences (PCEs) and adverse childhood experiences (ACEs) on children's healthy development. Nationally, 53.2% of children experience complex evidence-based social and/or relational health risks. The 31% experiencing both types of risks are 2.6 times more likely to have a mental, emotional or behavioral (MEB) health problem (39.5%). With 2 or more of each type of risk MEB problems rise to 61%, and half have a special health care need. Preventing or addressing established risks requires the integration of health care, social and educational systems. A proactive focus on promoting positive relational health is also critical. Even in the absence of social risks, like poverty, food insecurity or neighborhood violence, children with relational health risks, like multiple ACEs and caregivers struggling to cope, are still nearly 3 times more likely to have an MEB problem. Even without any risks at all, many children still lack positive relational health and nurturance and are much more likely to have MEB problems and special needs and are less likely to flourish or be ready for school. Yet, evidence is clear that if we can support family resilience and connection and positive childhood experience at home, in schools and the community these risks are substantially mitigated.

With only 2 in 5 young children meeting national criteria for being ready for school, we need approaches like the EnAct! framework to address the well-being of all children, as is recommended in national Bright Futures Guidelines and in the Maternal and Child Health Bureau's strategic plan; along with those of other federal agencies and leaders. Together we can leverage the possibilities and stop persistent gaps in healthy development. Doing so means promoting positive experiences, building on strengths, and restoring hope to heal the intergenerational and collective trauma we carry to achieve the EnAct! framework's positive health purpose.

The decades of research, advocacy and systems change work led by a countless army of individuals and organizations enable us to meet this moment of opportunity to improve the well-being of children and families for generations to come if we prioritize the possibilities before us!

Table of Contents

<i>Foreword</i>	<i>I</i>
<i>Overview of the Engagement in Action Framework for a State Integrated Early Childhood Health System</i>	<i>1</i>
A. Introduction	1
B. Methods and Design Parameters	2
C. EnAct! Framework Purpose and Goals	5
D. EnAct! Framework Principles for Collaborative Action	5
E. EnAct! Framework Theory of Change	7
F. Key Elements of the EnAct! Framework Approach to Integrated Services	9
G. Opportunities and Requirements to Engage Families Across an Integrated System	14
H. Relevance, Roles and “Possibility Prototypes” Across Partners	15
I. Fostering Collaboration and Results Using Performance Measures.....	19
J. The Engagement in Action Framework Implementation Roadmap	21
<i>Looking Ahead for Positive Systems Change</i>	<i>30</i>
<i>Quick Links to the Attachments for the Engagement In Action (EnAct!) Framework</i>	<i>32</i>
<i>References</i>	<i>33</i>

Overview of the Engagement in Action Framework for a State Integrated Early Childhood Health System

A. Introduction

During 2022-2023 the Mississippi Thrive! Child Health and Development Project¹ (MST) under the leadership of [Dr. Susan Buttross](#) partnered with the Child and Adolescent Health Measurement Initiative⁷ (CAHMI) to define a process, conduct research and engage partners in the design of an actionable integrated early childhood health system framework that built on MST progress, lessons and partnerships. CAHMI is a center at Johns Hopkins Bloomberg School of Public Health led by [Dr. Christina Bethell](#). Since 1996 the CAHMI has led to advance the early and lifelong health of children and families in research, policy and practice, including the development of evidence-based, family engaged, whole child and family approaches to measure and promote positive health for all as well as to foster the cross-system and community partnerships, data, and policies needed to support this goal. CAHMI's development of the [Cycle of Engagement](#) model and

contributions to building and applying Positive and Adverse Childhood Experience Science (PACEs) for systems change were leveraged for the design of the resulting evidence-informed *Engagement in Action Framework for a Statewide Integrated Early Childhood Health System (EnAct!)*. Meant to not only provide a

roadmap for MST's continued work, the framework was also designed to allow MST to live on through the application of the framework nationally and locally. Since the framework integrates best practice approaches and builds on progress in the field at large, hopes are high for this outcome.

The EnAct! framework design process resulted in a shared "Positive Health for All" purpose, set of goals and principles for collaborative action. An approach to integrated services based in family engagement is specified, along with an [online toolkit](#) with practice-based resources to support implementation of this approach. Both pediatric health care providers and community-based professionals can use the toolkit resources, which include approaches to 1) engage families, 2) ensure the provision of valid, comprehensive, Bright Futures Guidelines aligned whole child and family assessments and 3) identify and meet family priorities and goals. A notable feature of the EnAct! framework is the specificity with which it identifies an approach to child and family engagement and services, maps feasible roles for cross-sector partners within

“Advancing a whole child and family well-being approach was a particular priority given growing evidence regarding the impact of social and relational health factors in child development and health. These goals require continued progress to promote universal development screening and going beyond health promotion focused on parenting behaviors like reading to children toward efforts to advance a stronger integration of the science of healthy child development related to positive and adverse childhood experiences (PACEs).”

current constraints, and lays out an implementation roadmap with concrete, actionable policy directions, data, and measures to support sustainable transformative change.

B. Methods and Design Parameters

Figure 1 summarizes key inputs and methods used in the design of the Engagement in Action (EnAct!) Framework and provides a high-level summary of the framework elements. Design efforts were built on the foundation of MST progress, a strong science and evidence base, federal laws requiring Bright Futures Guidelines-aligned services and Medicaid Early and Periodic Screening, Diagnostic and Treatment (EPSDT), as well as several government agency policies on services and performance measurement related to early childhood development. A fast-paced and highly engaged development and research process was employed that incorporated rapid feedback loops to support iterative decision making. As further delineated in [Attachment B](#), the following seven methods were simultaneously employed to inform, shape and create the EnAct! framework through five two-month phases. This work culminated in a [signing ceremony](#) with the new MST [Early Childhood Development Coalition](#) (ECDC), which evolved from the MST Advisory Board. The seven methods were:






1. Structured interviews, MST document reviews and multiple weekly team discussions
2. An in-depth review and synthesis of the literature and related framework in the field
3. Research and data analysis to define the realities of the current system in Mississippi
4. Partner environmental scan and specification of relevance, roles, and existing measures
5. MST partners “Possibilities Prototype” development and real time integration of lessons
6. EnAct! framework approach pretest pilots and outreach with feedback to inform design.
7. Policy research, analysis and group discernment on policy levers and priority strategies to pursue to advance the EnAct! framework

Early in the process, five key design parameters were developed. The emerging framework must:

1. Put **families at the center** of services and system change efforts.
2. **Be interoperable** so that community, family, health care providers, and other early childhood system professionals fully partner to assess and support families and create a seamless link between primary care and community-based supports and services.
3. **Build on MST progress** to scale high quality medical home services that optimize pediatric well visits by addressing the health of the whole child and family, promoting social and relational health, and building the centralized resource and referral capacity.
4. **Leverage existing Mississippi policies and program strengths**, promote shared accountability and integrated performance measurement, and identify and advance policy levers to pursue in the shorter- and longer-term.
5. **Activate short term actions and improvements** in services and programs for families across key MST partners so that action can take place as learning and improvement evolve through sustainable implementation supports and resources.

Figure 1: Summary of the Engagement In Action (EnAct!) Framework Development and Design Summary

The Engagement in Action (EnAct!) Framework for a Statewide Integrated Early Childhood Health System
 The EnAct! Framework Design Process Inputs, Activities and Outputs

Assets & Inputs	Design-Based Activities and Methods	Outputs—The EnAct! Integrated Health System Framework
<p>Existing state progress to lift family centered medical homes, build workforce capacity, create centralized resources, educate the public, establish partner commitment to family engagement and an integrated system framework approach</p>	<p>Collaborative analysis of baseline progress, practices, partners, structures and policy levers</p>	<p>Framework Purpose: Positive Health Equity The purpose of the EnAct! framework is to catalyze child health equity and improve child flourishing, school readiness and family resilience.</p>
<p>Availability and expertise on evidence-based models, tools and approaches that engage families and cross-sector partners to drive equitable, healthy development of children and families.</p>	<p>Collaborative specification of shared purpose, goals, design principles, approach to care, relevance/roles of partners, implementation roadmap</p>	<p>Framework Goals—One Big Doable Thing</p> <ol style="list-style-type: none"> All In: Universal provision of comprehensive, personalized, whole child and family preventive and developmental services. Real Engagement: Families are engaged to access and ensure services are personalized to their goals and needs and to shape improvements in practice, policy and systems of care Seamless System: All early childhood systems intentionally collaborate to optimize early screening, address social and relational health needs, and promote well-being
<p>Bright Futures Guidelines translated into actionable tools linked to payment and policy incentives.</p>	<p>Action Research using environmental scans, document, policy, program reviews, state specific data and policy analysis, structured interviews, case study development, fact checking, etc.</p>	<p>Framework Approach</p> <ul style="list-style-type: none">  “Through any door” family engagement to activate trust and partner in care  Universal developmental and comprehensive whole child and family screening and assessments  Personalized, Strengths-Based Health Promotion and Supports  Coordinated, Warm Links to Quality Services and Interventions  Outcomes and Equity-Based Quality Measurement and Improvement
<p>The science of healthy development and Positive/Adverse Experiences (PACEs) with available state data to track needs and outcomes.</p>	<p>Partnership landscape analysis to specify relevance of emerging framework and current and potential roles across partners</p>	<p>Implementation Roadmap: Key Actions</p> <div style="display: flex; justify-content: space-between;"> <div style="background-color: #9C27B0; color: white; padding: 5px; width: 20%;"> <p>Establish a sustainable, cross-system, multi-level state leadership capacity</p> </div> <div style="background-color: #9C27B0; color: white; padding: 5px; width: 20%;"> <p>Create a culture of engagement among families, professionals, and system partners</p> </div> <div style="background-color: #9C27B0; color: white; padding: 5px; width: 20%;"> <p>Catalyze, facilitate, study and spread cross-sector, practice-based implementation</p> </div> <div style="background-color: #9C27B0; color: white; padding: 5px; width: 20%;"> <p>Drive enabling and incentivizing policies and financing strategies critical to success</p> </div> </div>
	<p>Create “Possibility Prototypes” for each key partner to illustrate applied relevance, roles, requirements and inform framework and implementation roadmap</p>	<p>Engaged Leadership</p> <ul style="list-style-type: none"> Mississippi Thrive! Early Childhood Development Coalition advances the EnAct! framework across state partners
	<p>Pilot testing in pediatric primary care and community based resource partners to foster use and collaboration</p>	

Source: Child and Adolescent Health Measurement Initiative, Feb. 2023

These design parameters led to featuring “Engagement” and “Action” in the naming of the Engagement In Action (Enact!) Framework, with the intent to spotlight the central importance of real engagement and relational health within families, communities, and across system partners as well as to the importance of delineating strategies that can be acted upon in the short term in

*“The design parameters also inspired a framework motto to, if nothing else, achieve **“One Big Doable Thing!”**, which is to ensure all young children and families receive timely, high quality, personalized whole child and family preventive and developmental services in the context of an integrated system focused on improving health for all children, child flourishing, school readiness and family resilience.”*

order to advance further systems transformation. The design parameters also inspired a framework motto to, if nothing

else, achieve “One Big Doable Thing!” which is to ensure all young children and families receive timely, high quality, personalized whole child and family preventive and developmental services in the context of an integrated system focused on improving child health, child flourishing, school readiness and family resilience. To do so, available guidelines, structures, financing, incentives and policies already in place for primary care well child visits, early intervention, home visiting, early care and education, child welfare and others should be leveraged while continuously improving services and advancing system and policy change. Informed by the research, data analysis, and feedback from partners, within two months a

framework name, draft purpose, set of goals, approach to services and implementation roadmap were drafted. Pretest pilots and specification of Possibility Prototypes with system partners and development of policy levers ensued.

Why Well Child Care Services and Visits?

Paid for and monitored in performance accountability systems for Medicaid, health plans and health systems, fifteen pediatric well child care services and visits are recommended in a child’s first six years of life. Yet only about half of these visits are estimated to take place each year, with 9 in 10 children failing to receive all of a core subset of four recommended services even when they do occur (developmental screening, maternal depression screening, family centered care, parent concerns addressed).²¹ See [Attachment A](#).

Well-child care services and encounters with professionals are critical to promoting lifelong whole child and family health as these opportunities (1) are the most accessible portal into young families before children enter preschool, (2) provide an opportunity to develop trusting relationships between providers and families to promote child and family strengths and (3) coordinate and link children and families to concrete supports. Imagine the possibilities for child and family well-being if more children attend high quality, system-integrated well visits as featured in the EnAct! framework.

C. EnAct! Framework Purpose and Goals

The purpose of the Engagement in Action (EnAct!) Framework is to drive **health for all children and improve child flourishing, school readiness and family resilience**. The EnAct! framework seeks to achieve its positive health for all purpose by advancing three key strategic goals:

- 1. All In:** Universal provision of comprehensive, personalized, whole child and family preventive and developmental services using best practice Bright Futures Guidelines.
- 2. Real Engagement:** Families are engaged to access and ensure services are personalized to their goals and needs and to shape improvements in practice, policy, and systems of care.
- 3. Seamless System:** All early childhood systems intentionally collaborate to optimize early screening, address social and relational health needs, and promote well-being.

The approach to care, summary of partner roles, and implementation roadmap components of the framework summarized in the sections below bring these goals to life. Each rely on collaborative, transformational relationships, which were recognized as the most important success factor. As such, a short set principles for collaborative action (or “simple rules”) essential to guide daily action across partners were identified. The need for additional principles to guide the multi-layered, collaborative, and transformational relationships required at all levels were also explored.

D. EnAct! Framework Principles for Collaborative Action

Recognizing the complex nature of systems change and the wide range of individuals and organizations that need to be involved, a set of easy to remember principles for collaborative action (also referred to as “simple rules”)²⁹ are included in the EnAct! framework. These are meant to inform day-to-day relationships with families and across system professionals, as well as to guide state and community partnerships essential to advancing an integrated early childhood health system. Applicable to all partners across healthcare, community, family, and program settings, the “simple rules” comprise a set of shared agreements for approaching interactions with families and other system partners, which must be personalized and therefore require guidelines for success rather than specific procedures to be followed.

The **four principles (or “simple rules”)** are:

- 1. Everyone a leader:** All partners, including parents/caregivers, need to remember and recognize their strengths, skills, power, position, and resources they have to proactively use as a leader in order to promote the healthy development of children and advance the EnAct! goals.
- 2. Through any door:** All partners need to remain aware of, inquire about, and take responsibility for ensuring children receive developmental screening and preventive services and families are empowered to do so.

3. ***In every encounter***: All partners commit to creating safety, trust, and care with each child and family and with each other to build a “through any door” relational system of care.
4. ***No broken link***: All partners work together to discover, establish, and use methods to connect and share information with one another and ensure each child and family leaves their presence with a positive next step.

Additional principles for collaborative action are important to guide the success and sustainability of the many state and community partnerships needed to lead and continuously improve upon an integrated early childhood health system in the communities where children and families live. Mississippi has a rich set of resources with expertise in establishing and maintaining effective partnerships that can be leveraged for this purpose, including the expertise of the Mississippi State University’s [System Change Lab](#) (led by the ECDC’s co-chair Dr. Heather Hanna) and the [Excel By 5](#) initiative that trains and certifies community partnerships dedicated to the healthy development of children age 0-5. Also relevant are principles and self-assessment and improvement resources for successful [community/neighborhood partnerships](#) set forth by the Center for the Study of Social Policy, which has worked with several communities to advance an integrated early childhood systems.

Importantly, principles for collaborative action are needed to guide the success of the Mississippi Thrive! ECDC and other state collaborative bodies. These principles should be agreed to and routinely reflected upon in these partnerships. Example systems change framework include the [Collective Impact](#) model and the [Waters of Systems Change](#) model, each of which align with the values and approach to collaboration set forth in the [ECDC Charter](#) that recognize the primary importance of aligning mindsets and vision while creating positive relationships based on a [growth mindset](#). For example, existing principles that align with those the ECDC aspires to and include: (1) *Community Capacity*: Strengthen individual and collective capacity to lead to improve the system and services; (2) *Authentic Relationships*: Build relationships among families and between families and professionals that serve them; (3) *Families as Experts*: Center family experiences and stories as sources of knowledge, expertise, and solutions; (4) *Providers and Professionals as Learners*: Position providers and professionals as learners working to improve their practice; (5) *Balanced Power*: Attend to power imbalances and plan for equal voice and influence; (6) *Family-driven Goals*: Begin with and prioritize family goals and concerns in all services and system change strategies

MST has learned that the advancements needed to achieve an integrated early childhood health system will only through transformational relationships across systems partners. As such, the principles to guide the “how” of building an integrated health system to promote child and family thriving are emphasized as a core component of the EnAct! framework deserving of the same attention paid to the “what” of the framework itself.

E. EnAct! Framework Theory of Change

As important as identifying principles for collaborative action is defining a theory of change for how an integrated early childhood health system could drive improvements in the healthy development and lifelong well-being of children and families. In this regard, the Engagement In Action (EnAct!) Framework was informed by an extensive environmental scan and review of dozens of recent and historical reports related to advancing an integrated early childhood

The Engagement In Action (EnAct!) Framework was informed through an extensive environmental scan and review of dozens of reports related to advancing an early childhood development system. Conceptually, the EnAct! framework is closely aligned with the AAP's family centered medical home model, the Center for the Developing Child's design principles to promote children's healthy development... and the CAHMI'S Cycle of Engagement five-part theory of action to create tools, relationships and system capacity to implement best practice services and supports to promote healthy development and thriving.

developmental health system (see [Attachment B](#)). It was also informed by the logic that promoting the healthy development of children requires services and supports that proactively promote their physical, environmental, social, and relational health, which is only possible through collaboration among early childhood services across health care, early care and education, early intervention, home visiting, child welfare and the array of community and family-based organizations that directly interact with families on a daily basis.

In addition to this self-evident logic, evidence demonstrating possibilities to support nurturing relationships and environments for all children by promoting positive childhood experiences (PCEs), preventing and mitigating impacts of adverse childhood experiences (ACEs) and addressing social determinants of

health were central in the design process.^{16-20,23, 30,31} As such, the EnAct! framework team saw a high leverage opportunity to translate the American Academy of Pediatrics' relational health policy statement,¹⁶ family centered medical home model⁸ and existing national Bright Future Guidelines³² that together lay out a path to translate the science in policy and practice.¹⁶ Concepts and evidence from several other sources informed the design of the framework. This included the Harvard University's Center on the Developing Child's (CDCH) "three-part design principles" to improve outcomes for children and families,²⁰ the 2020 National Academies report on fostering children's mental health,¹⁷ the *HOPE and a New Science of Thriving approach*,^{30,31} the national *2017 Prioritizing Possibilities* agenda^{3,1} and associated *Payment for Progress*³⁴ recommendations to leverage preventive services to address ACEs and promote the social and relational roots of well-being. Results from a 2020 national HRSA funded Maternal and Child Health Measurement Research Network [summit](#)³⁴ that included family, provider, research, federal, and state leaders was also leveraged and findings further confirmed agreement across stakeholders about key features and measurement approaches needed to achieve high quality

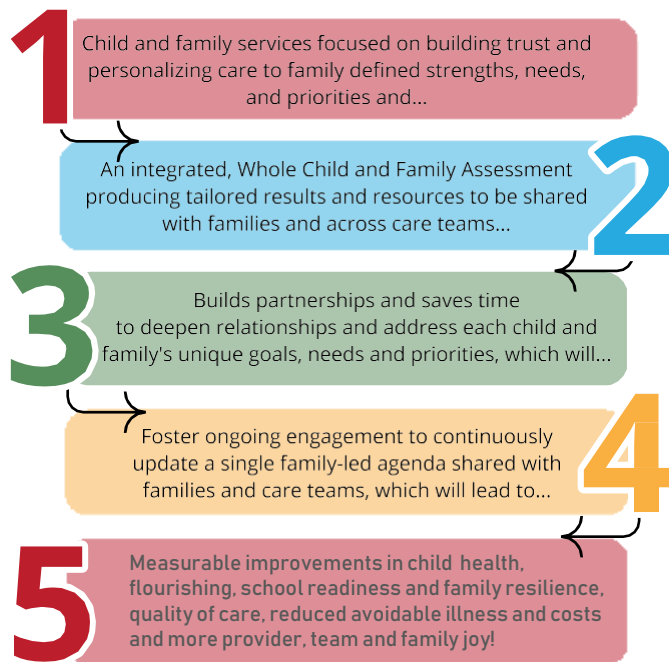
preventive services that promote the healthy development of young children. The meeting specifically evaluated the CAHMI’s Cycle of Engagement (COE) model and a new Help Me Grow National and *Pediatrics Supporting Parenting* study report documenting alignment and support for the COE approach and associated family engaged data and reporting tools.³⁵

Figure 2 summarizes the COE theory of change that informed the EnAct! framework approach to services for implementing best practice services and supports that promote the healthy development and thriving of children.³⁶

At a systems-change level, the EnAct! framework responds to recommendations set forth in the 2018 Global Nurturing Care Framework,³⁷ that calls for country, state, and local collaborative efforts that:

- (1) assess the current situation and identify opportunities within and across different sectors for strengthening support for nurturing care;
- (2) develop a common vision, set of goals and targets;
- (3) prepare a coordinated plan of action;
- (4) specify an approach to advance integrated policies on early childhood development;
- (5) assign clear roles and responsibilities for implementing the plan, at all levels of government;
- (6) give sub-national and local authorities the means to act;
- (7) prepare a long-term financing strategy; and
- (8) build on any available funding streams that support the components of nurturing care.

Figure 2: Summary of the Cycle of Engagement Theory of Change for Positive Health for All



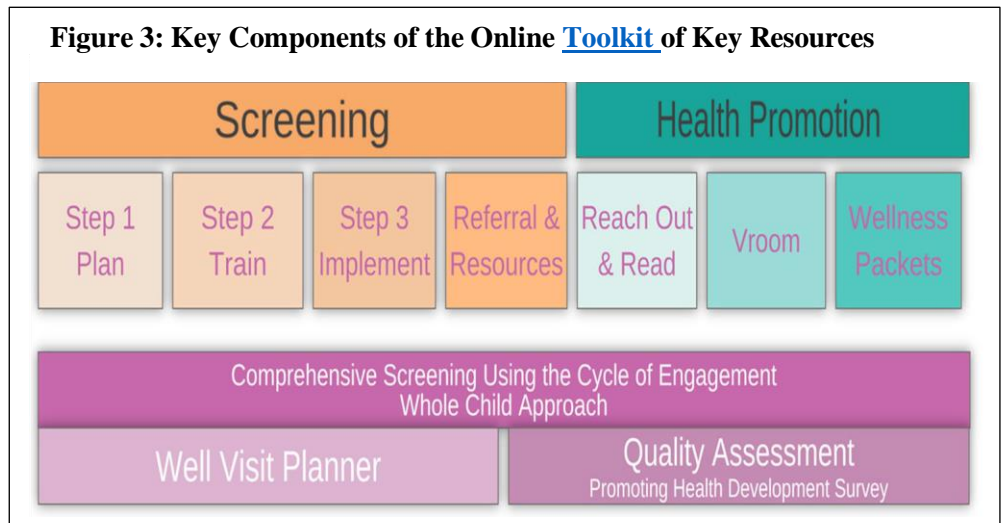
F. Key Elements of the EnAct! Framework Approach to Integrated Services

There are five key elements to the Engagement in Action (EnAct!) Framework approach to integrated services, which are aligned with national Bright Future Guidelines and best practice family-centered models of care and the *Cycle of Engagement* model summarized above:

1. “Through any door” family engagement to activate trust and partner in care.
2. Universal developmental and comprehensive whole child and family screening and assessments.
3. Personalized, Strengths-Based Health Promotion and Supports.
4. Coordinated, Warm Links to Quality Services and Interventions.
5. Outcomes-Based Quality Measurement and Improvement.

Many tools and resources can be used by early childhood development professionals to implement each element of care. Featured tools and resources set forth in the EnAct! framework are summarized below and include those implemented using the MST EPMHS model as well as those created to implement the *Cycle of Engagement* evidence-based model and tools. Information about each of the featured resources are available in an online toolkit illustrated in Figure 3 and can be accessed [here](#).

What follows is a brief description the five elements of the EnAct! framework approach to integrated, whole child and family services to promote healthy development. See Figure 4 for visualization of these five elements and how they relate to the “simple rules” described above.



Element #1: “Through any door” family engagement to activate trust and partner in care.

At the core of the integrated systems approach is family engagement. Child and family professionals across settings can only succeed by building respectful, empowering, and warm relationships with the children and families they serve “in every encounter” and “through any door”. Family engagement is both a process and outcome dependent upon establishing a culture of engagement among families, providers, and system leaders. Proactive training is needed to

establish the core competencies and processes required for effective engagement and partnership with families. This is a central focus of Families as Allies and other MST partners.

Element #2: Universal developmental and comprehensive whole child and family screening and assessments.

It is widely agreed upon that universal developmental screening and comprehensive child and family assessments are fundamental to early identification and intervention for children with risks and to promote healthy development. Yet, these are far from the norm in the nation. The EnAct! framework features the family facing [Well Visit Planner](#) (WVP) digital tools that include and report on results from all family reported screens recommended in Bright Futures Guidelines for each age visit as well on family priorities for health education and supports. The WVP is offered as an exemplar tool to overcome long-standing barriers to implementation, *including needs for a standardized, family centered approach to assessment that is interoperable across system partners and results in family and provider/professional reports with tailored resources.*

Element #3: Personalized, strengths-based health promotion and supports.

Face-to-face time with children and families is often limited but critical (even if using telehealth). Yet, the extensive range of important screens, topics, and issues to address for each child and family during preventive services encounters make it challenging to discover family goals and priorities and build on child and family strengths. As noted above, the EnAct! framework approach promotes time-saving digital resources, like the Well Visit Planner (WVP), to engage and activate families while streamlining screening, identification of family priorities and to make time for important language development and caregiver/child attachment interventions. These resources can be used by pediatric health care providers and are also ideal for use family specialists, community health workers and care coordinators featured in evidence-based models like Healthy Steps³⁸ of Dulce³⁹; or by home visiting, early intervention, child welfare or early care and education professionals who share goals and accountability to promote the healthy development of young children.⁴⁰ The availability of interoperable resources to engage families is a central strategy to enable the integrated systems approach needed to ensure the effective engagement of families to promote personalized, whole child health promotion “through any door”. Figure 5 below further illustrates how the EnAct! framework purpose, goals, approach to care, simple rules work together and introduces the EnAct! implementation roadmap.

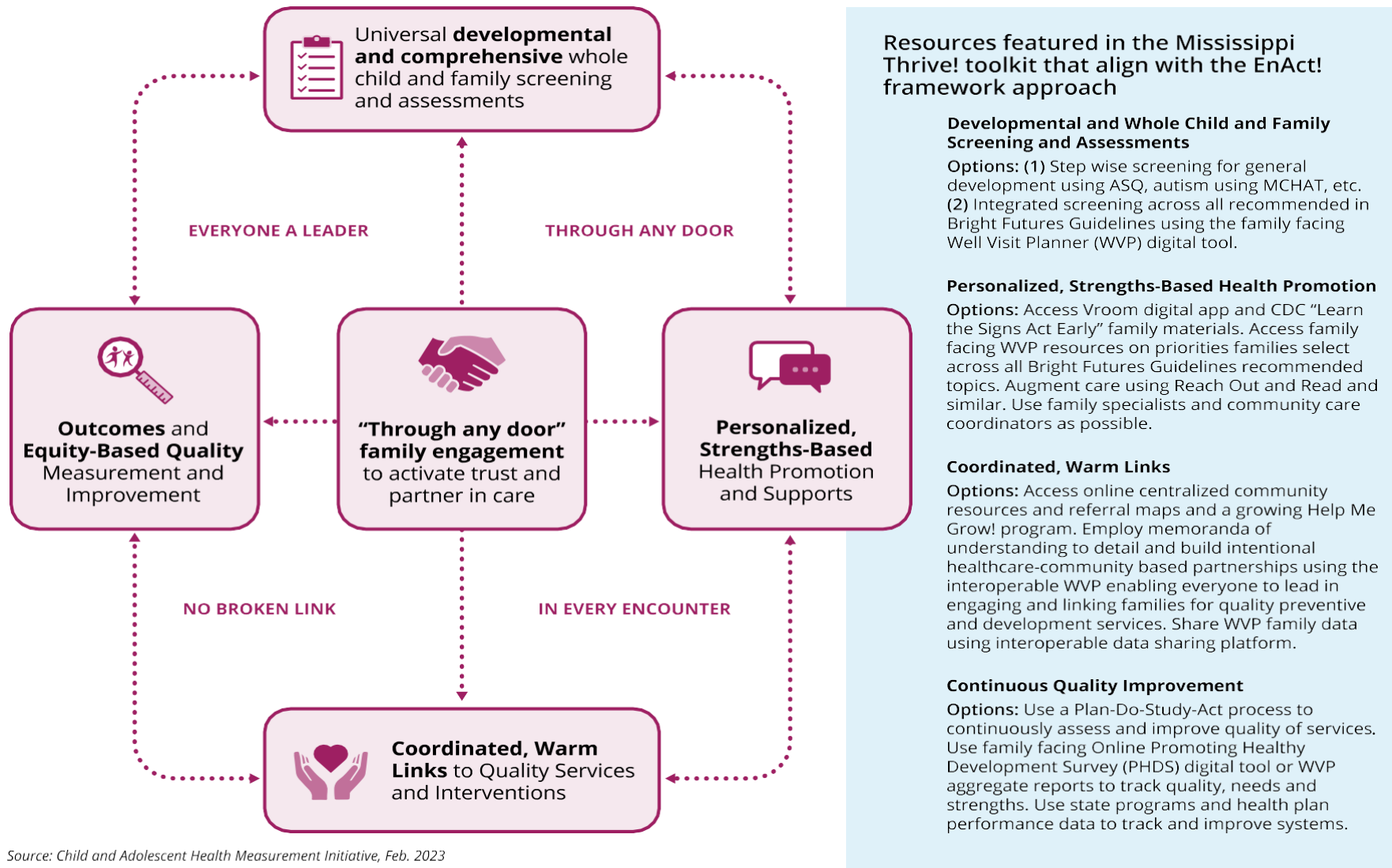
“The pediatric health care system provides a strong foundation for a statewide developmental promotion system because it can be universally accessible, build on relationships families trust, and provide an individualized approach to teaching families, and connecting them to other services. Despite this unparalleled opportunity, sometimes the health system is not an integral partner within a comprehensive early childhood system. This results in missed opportunities to reach and partner with families to promote child development.” Jill M. Sells, MD

<https://mississippithrive.com/wp-content/uploads/2022/04/health-systems-sells-brief-2.0-3.pdf>

Figure 4: Overview of Key Elements Comprising the Engagement In Action Framework Care Model

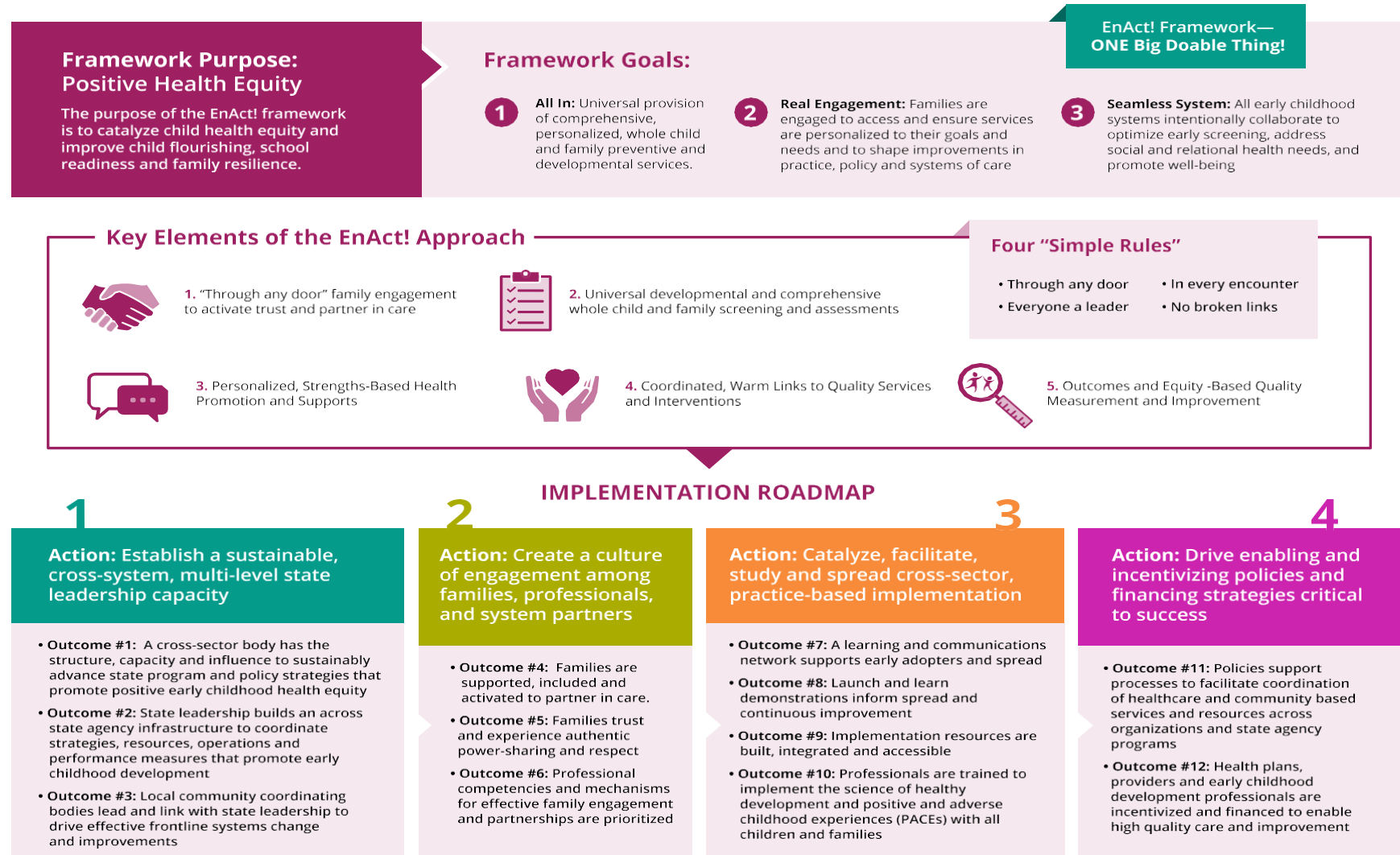
The Engagement in Action (EnAct!) Framework for a Statewide Integrated Early Childhood Health System

Collaboratively designed with Mississippi Thrive! by the Child and Adolescent Health Measurement Initiative



Source: Child and Adolescent Health Measurement Initiative, Feb. 2023

Figure 5: Overview of the Engagement In Action Framework Goals, Approach and Implementation Roadmap
The Engagement in Action (EnAct!) Framework for a Statewide Integrated Early Childhood Health System
 Collaboratively designed with Mississippi Thrive! by the Child and Adolescent Health Measurement Initiative



Source: Child and Adolescent Health Measurement Initiative, Feb. 2023

Element #4: Coordinated, warm links to quality services and interventions.

Coordinating services across pediatric primary care providers, community-based organizations, and specialized service settings requires intentional relationship building, defined collaboration processes, and easy-to-access information about high-quality accessible resources. The EnAct! framework features online centralized resource maps to help family-facing professionals link families to accessible care that meets their unique needs and priorities. Resources to foster cross-service partnerships and the activation of families to partner in care, like an example [Memorandum of Understanding](#) created with the [Mississippi Families for Kids' Help Me Grow](#) program to link pediatricians and community-based resources are also featured. To further support this coordination, when professionals use the Well Visit Planner (WVP), they can agree to use the WVP data sharing platform to prevent unnecessary duplication of child and family assessments and ensure that the family agenda and results from standardized assessments across all professionals is used to guide services.

Element #5: Outcomes-based quality measurement and improvement.

Baseline and routine measurement of child and family health and needs, as well as the quality of services provided, is critical to monitoring and improving services and health outcomes over time. Numerous measures currently used across several early childhood programs align with the Engagement In Action (EnAct!) Framework and additional measures and data are available to help fill gaps in measures across these programs. See [Attachment C](#) for an analysis of current measures and gaps in measures used across early childhood health programs, including Medicaid/CHIP, Title V, Early Intervention, Child Welfare, Maternal and Infant and Early Childhood Home Visiting, Community Health Centers/FQHC's as well as to hold managed care plans accountable (NCQA/HEDIS). Standards used for Head Start/Early Head Start, the Supplementation Nutrition Program for Women, Infants and Children (WIC), and the Child Health and Development Fund early care and education program (CCDF) were also reviewed to assess relevance and alignment with the EnAct! framework.

Sources of data immediately relevant to track quality and outcomes associated with the EnAct! framework approach include:

- (1) State and local application of child flourishing, school readiness and family resilience metrics from the [National Survey of Children's Health \(NSCH\)](#).²⁴ See [Attachment A](#) for current data findings and a more extensive list of measures relevant to children age 0-5 available through the NSCH.
- (2) State and managed care health plan results on key preventive care measures (e.g., well-child care visit rates) can be accessed through the National Committee for Quality Assurance's Healthcare Effectiveness Data Information System's²⁵ [managed care plan tracker](#) for each NCQA accredited health plans in the United States.
- (3) Centers for Medicare and Medicaid Services child [core set](#) of metrics tracking provision and quality of well child visits (e.g., well visit rates, developmental screening rates.)²⁶

- (4) State, plan, and provider use of the family-completed [Promoting Healthy Development Survey \(PHDS\)](#) aligned with Bright Futures Guidelines, which provides rich feedback to drive improvements in care and can be used at the state, plan and provider levels.^{21,27,28}
- (5) Use of the aggregate data produced through the [Well Visit Planner](#) that provides information to assess needs, outcomes and positive outcomes for children and families.³³

Opportunities also exist to strengthen measures used across early childhood system partners, especially in assessing the EnAct! framework’s positive health purposes and the *All In, Real Engagement*, and *Seamless System* goals. Results of the measurement assessment reported on in greater detail in [Attachment C](#) reveal that gaps are greatest for the *Real Engagement* and *Seamless Systems* goals of the EnAct! framework. In these areas, while there are some family reported measures included those used to assess performance (e.g., the family centered care measures and care coordination measures available through the NSCH and Medicaid/CHIP Consumer Assessment of Health Plan and Providers Survey measures), additional measures are important to explore. For this, resources exist to support state and local areas to assess performance using self-assessment tools. For example, the Center for the Study of Social Policy created a toolkit to help early childhood systems to evaluate [family engagement and partnerships](#) using self-assessment tools. Mississippi’s [Families as Allies](#) program is a key resource to assess and improve engagement and partnerships with families. The [education sector](#) has [robust programs and models](#) for engaging families and has specifically advanced measures of family engagement that rely on reports from families. An important system assessment tool related to family engagement in health care is the Family Engagement in Systems Assessment Tool ([FESAT](#)) developed through Family Voices. While this is also a self-assessment, it includes obtaining assessment by family leaders.

Related to the *Seamless Systems* goal, the EC-LINK program led by the Center for the Study of Social Policy has set forth [indicators](#) to consider to assess the early childhood system. These are also self-assessment tools that are powerful, but do not include direct reports across individuals served by the system. Further measures based on [Community Based Participatory Research](#) principles are especially relevant to shape effort to evaluate the quality of cross sector and community partnership essential to success. The Global [Nurturing Care Framework](#) also outlines [criteria for effective early childhood programs](#) in national, state and local contexts that can guide considerations of how to assess efforts to advance state and local early childhood integrated health systems.

G. Opportunities and Requirements to Engage Families Across an Integrated System

The Engagement in Action (EnAct!) Framework approach elements are interconnected and mutually reinforcing. Figure 6 further illustrates the “through any door” EnAct! approach for engaging families and ensuring all access points have tools and resources to validly conduct assessments and share data with system partners to address needs and priorities of the child and family. Implementing the approach requires that its elements be interoperable and possible to

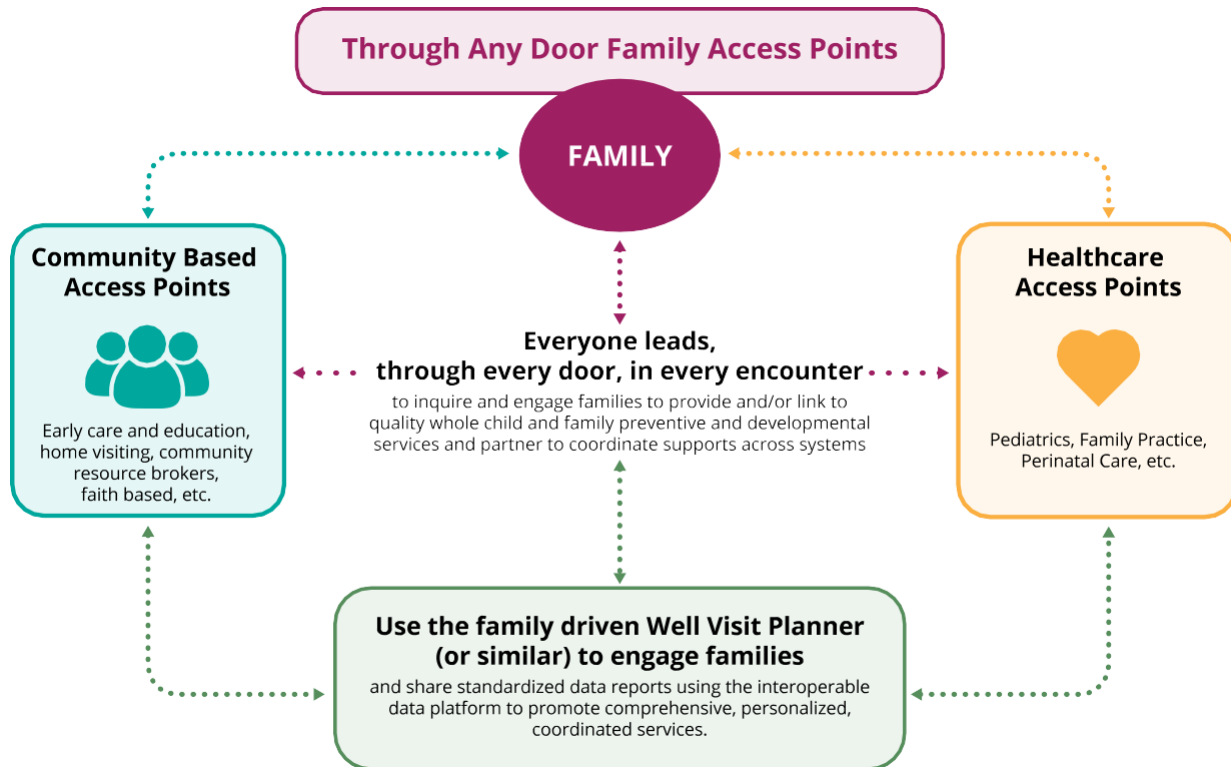
embed across early childhood partners with the children and families served, including mechanisms to easily assess needs, access resources, and link children and families to other system partners who meet child and family needs and promote wellbeing. Partners engaged in the EnAct! framework process explained that this is one of the reasons the [Well Visit Planner](#) (WVP) tool was relevant to many system partners as summarized in the EnAct! Possibility Prototypes ([Attachment D](#)). Since valid, guideline-based screeners, questions, scoring, and reporting methods are used in the WVP, it can be used with confidence across early childhood sectors despite varying levels of training about screening and assessments. Since all results are automatically scored along with links to tailored and credible resources based on child and family needs and priorities, family support professionals can ensure assessments are completed needs are met and priorities are addressed. Also, since the WVP integrates assessments, each early childhood system partner does not have to separately license and pay for, administer, and score each individual screener in a step-wise manner. See Figure 7 for a synthesis of the criteria for tools and approaches partners identified as important to enable the cross-partner coordination that approaches like the WVP can meet.

H. Relevance, Roles and “Possibility Prototypes” Across Partners

Figure 6: Application of the EnAct! framework approach across early childhood system partners

Illustration of the Engagement In Action Framework’s Through Any Door Approach

Towards a Family Engaged, Community Based, Integrated Early Childhood Health System



Source: Child and Adolescent Health Measurement Initiative, Feb. 2023

At the start of the EnAct! framework development process, existing and important early childhood developmental and behavioral health system partners at the local, state, and federal levels were identified. As further delineated in [Attachment C](#), these partners include:

- (1) family and community organizations
- (2) state and federal governmental agencies, advisory bodies, and programs,
- (3) health care systems, health plans, provider organizations, and health research centers
- (4) county and city health agencies and non-governmental early childhood programs

An in-depth partner landscape analysis was conducted to both inform the design of the

Engagement in Action (EnAct!) Framework and specify the potential relevance and alignment of the emerging framework to each existing or potential partner. This included an in-depth assessment of each partner’s mission, goals, programs as well as statutory obligations and reported performance standards in place. Based on this analysis, which also included website and document reviews and one-on-one interviews with key partners, a proposal summarizing each partner’s relevance and leadership roles to advance the EnAct! framework was set forth as depicted in Figure 8. A set of *Possibility Prototypes* ([Attachment D](#)) were also collaboratively created to envision application across system partners. See Figure 9.

Through the iterative design of the prototypes, a final assessment of potential leadership roles for each partner was conducted, identifying which of the many essential leadership roles each partner might play in collaboration with other partners, including 1) Maintain Systems Building Structures, 2) Change/Implement Policy, 3) Build/Fund Implementation Infrastructure, 4) Build Capacity for Family Engagement, 5) Direct Service Delivery, 6) Service Access and Coordination, 7. Build Workforce Capacity. Our analysis confirms that all partners to are important to each leadership role, with no partner having fewer than three defined roles. For a more detailed articulation of the potential relevance and roles across partners see [Attachment C](#).

Figure 7: Key criteria for tools and models needed to implement the EnAct! approach

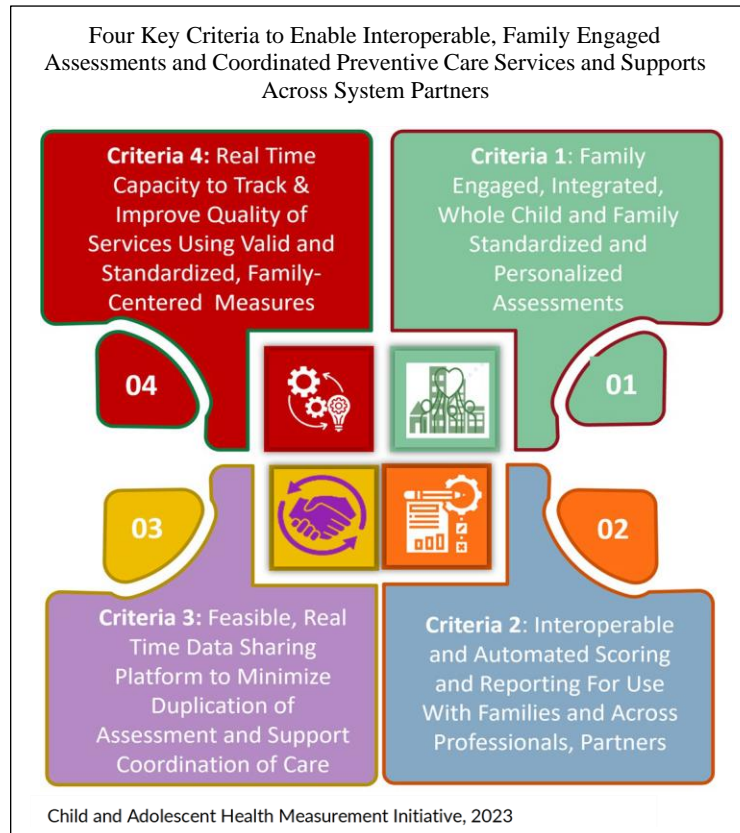
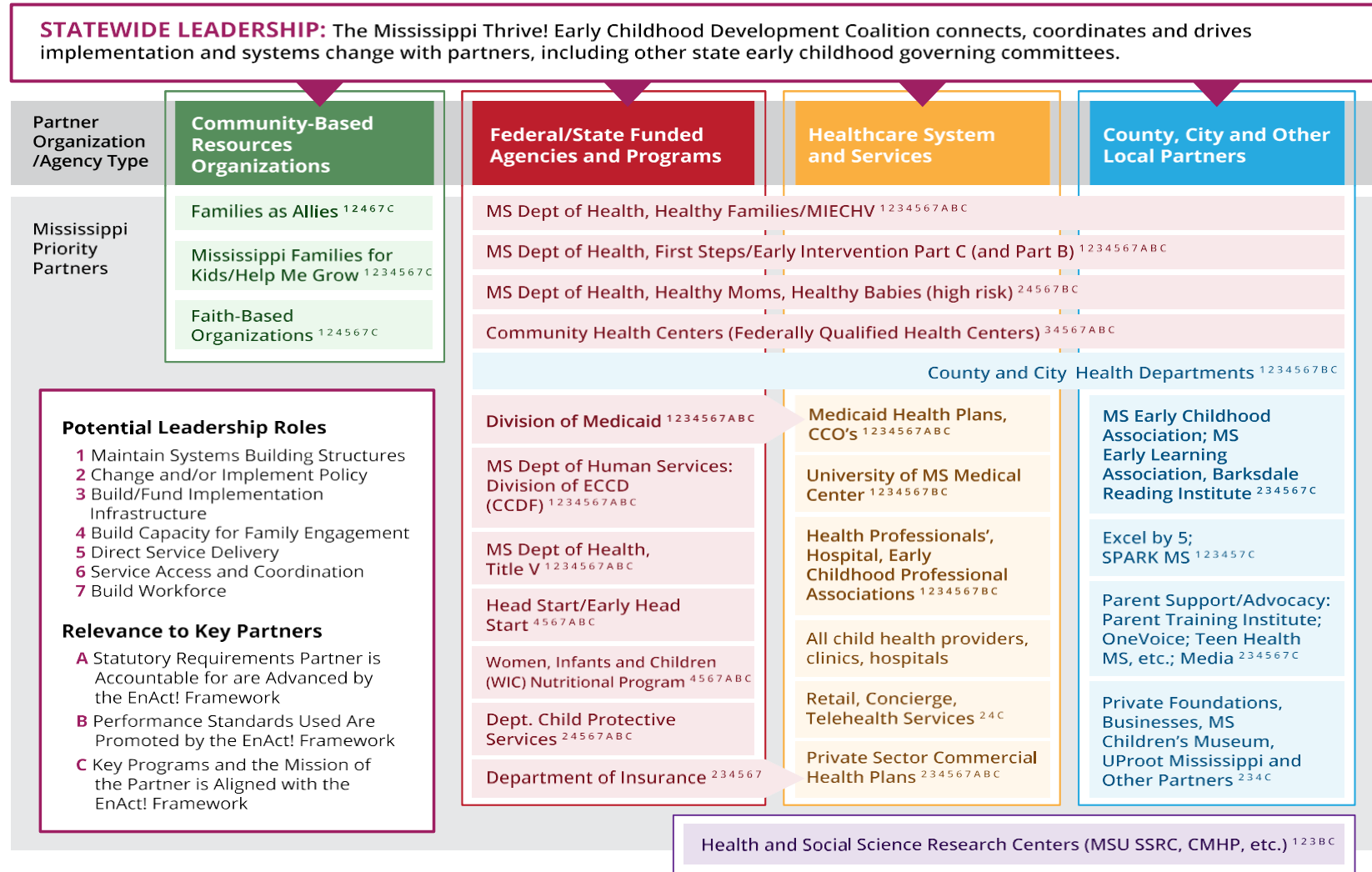


Figure 8: Landscape of Existing and Potential Partners and the Relevance and Roles of the EnAct! framework for each
Landscape of key partners in the Engagement In Action (EnAct!) Integrated Early Childhood Health System Framework Illustration of the relevance of and roles across key partners in implementing the EnAct! framework



Annotations assigned based on analysis and require further partner assessment.

Source: Child and Adolescent Health Measurement Initiative, Feb. 2023

Figure 9: Landscape of Existing and Potential Partners and the Relevance and Roles of the EnAct! framework

The Engagement in Action (EnAct!) Framework for a Statewide Integrated Early Childhood Health System
 Collaboratively designed with Mississippi Thrive! by the Child and Adolescent Health Measurement Initiative

Overview of the Engagement In Action (EnAct!) Framework Possibility Prototypes: Envisioning relevance and application of the EnAct! Approach Across Key State Integrated Early Childhood Health System Partners (see Attachment D to read each brief prototype)

Division of Medicaid and Coordinated Care Organizations/Health Plans
Activating the power of the payer to accelerate transformations in child and family wellbeing.
 The EnAct! approach supports Medicaid's obligation to ensure use and quality provision of EPSDT services and health plan requirements under the Affordable Care Act to provide and drive use of quality Bright Futures Guidelines aligned preventive services. Implementation population health and lower avoidable costs.

Family-Led Organizations
Fueling the capacity of family leaders to engage families as partners in their child's care.
 The EnAct! framework provides concrete approaches to directly engage and activate families to partner in their child's care and build collaboration systems and services that serve children and families. Families As Allies can leverage resources to ensure high quality family-driven early childhood health services.

Head Start/Early Head Start (HS/EHS)
Building on the strengths of child care and early education to help children thrive!
 The EnAct! approach helps HS/EHS meet goals to promote children's mental, social and emotional development and link them with primary care medical homes. At least 21 of 57 HS/EHS practice standards are directly advanced by the EnAct! approach. The HS/EHS program in Mississippi are essential to educate families about well visits and link them to care.

State Early Childhood Care and Development Programs and Resource/Referral Centers
Leveraging early childhood resources and services to engage families and promote early childhood development.
 The EnAct! approach can help the MS Department of Human Services use the Child Care and Development Block Grant to ensure childcare providers and family navigators meet goals to engage families, conduct screenings, link to resources, and support healthy child development and school readiness.

Pediatric Primary Care
Catalyzing a whole child and family approach in pediatrics, family medicine and beyond.
 When providers implement the EnAct! approach to care, they can better align with high quality medical home criteria and meet Bright Futures Guidelines by engaging families, feasibly conducting comprehensive assessments, linking to community resources and learning and improving population health and performance. Hospitals and specialists are also key partners.

Community-Based Family Resource Brokers
Engaging families to personalize and accelerate connections to services and supports.
 The EnAct! approach advances the Mississippi Families for Kids' Help Me Grow vision to conduct comprehensive developmental, social and relational health needs screening and connecting families to primary care and community resources and streamlines coordinated care and data sharing.

Home Visiting Programs
Meeting the needs of families through home-based personalized relationships and comprehensive support.
 Healthy Families MS can advance improved performance on 16 of 19 MIECHV performance measures using the EnAct! approach to care. Other MS home visiting programs can use the EnAct! approach to assess and track needs of the high-risk families and infants they serve and coordinate personalized care.

Early Intervention, Child Find
Using family-centered care to meet the unique needs of children at-risk for developmental delay.
 The EnAct! approach can catalyze achievement of early intervention's broader set of required services to proactively find and serve children needing developmental services as set forth in both Part C and Part B Early Intervention statute and detailed through Mississippi's Child Find system.

Child Welfare Professionals
Strengthening children and families to optimize well-being, healing, and stability.
 The EnAct! approach supports child welfare professionals and programs, like the Infant Toddler Court Program, by providing tools to engage and build trust with families to address social and relational risks, addressing trauma and linking to supports to prevent child maltreatment and unnecessary foster care placement, support the well-being of children and families.

Faith-Based Organizations, Community Centers
Igniting faith-based and trusted community centers to activate families and optimize use and value of preventive services and supports
 Faith-based and community centers are welcoming environments where families feel cared for by a close community. These institutions can promote the wellbeing of the families they serve by advancing the EnAct! approach, ultimately improving use and value of preventive services to close gaps in health.

Source: Child and Adolescent Health Measurement Initiative, Feb. 2023

To summarize further, as shown in Figure 8, twenty-five existing and potential implementation partners (or categories of partners) were identified. Sixteen of the twenty-five entities were found to have performance or practice standard requirements that make the EnAct! framework relevant. Eleven have statutory requirements associated with their federal or state mandate that compel action in areas addressed by the EnAct! framework's integrated system approach. All had program priorities and missions that make the EnAct! framework approach, goals, and strategies relevant to their work. Despite these similarities and alignments, programs and agencies were

functioning in silos, missing opportunities to collectively and effectively move towards population level improvements in child and family flourishing. The EnAct! approach is a powerful unifying strategy to improve outcomes and services for children and families as well as to build a culture and sustainable structures necessary for collective action and impact.

In terms of leadership roles, the seven critical roles noted above were identified and the strength of fit across partners was analyzed, leading to a starting point proposal for further consideration by Mississippi Thrive! Early Childhood Development Coalition. See Figure 8 for a synthesis of this analysis that partners can reflect on and further specify as a team to ensure all key roles are played and coordinated and all partners have the capacity to play the roles they agree to. To summarize, 11 partners were identified as being in a strong position to lead in all seven roles, 5 across six roles, 4 across five roles, 3 across 4 roles and 2 across 3 roles.

I. Fostering Collaboration and Results Using Performance Measures

As noted, a synthesis of accountability performance measures currently tracked across federal/state early childhood system partners was conducted and summarized in more depth in [Attachment C](#). Early childhood health system program partners included were Medicaid/CHIP, Title V Block Grant, the Maternal, Infant and Early Childhood Home Visiting program (MIECHV), Child Welfare, Early Intervention, Community Health Centers (Federally Qualified Health Centers), Head Start/Early Head Start, WIC, and the Child Care Development Fund. Overall, 309 standardized performance measures relevant to children and families were identified across the six programs that have standardized metrics (all but Head Start, WIC and CCDF). These measures cover 71 unique topics relevant to child and family health, with 28 topics overlapping across two or more programs and 13 across three or more. See Table 1 below for a list of these 13 measures. Each are highly relevant to the EnAct! framework and can be leveraged to foster cross-system, shared accountability, and collaboration. Metrics set forth by the AAP to track implementation of Bright Futures Guidelines were also reviewed for relevance to the EnAct! framework approach and showed direct alignment. See [Attachment C](#).

“Sixteen of the twenty-five partners have performance or practice standard requirements that make the EIA framework relevant. Nine had statutory requirements associated with their federal or state mandate that compel action in areas addressed by the EIA integrated system approach.”

Table 1: Performance Measurement Topics Shared Across Three or More Programs*

<i>13 of 71 Topics that Represent All 309 Measures are Shared Across 3+ Programs</i>	CHCs, FQHCs	NCQA, HEDIS MCOs	MIECHV, Home Visiting	Medicaid, CHIP	Title V Block Grant
1. Prenatal and Postpartum care	✓	✓	✓	✓	✓
2. Receipt of Dental Care Services	✓	✓		✓	✓
3. Well Child Visits		✓	✓	✓	✓
4. Adolescent Well Visits		✓		✓	✓
5. Well Woman Visit		✓		✓	✓
6. Completed Depression Referrals	✓	✓	✓		
7. Depression Screening	✓	✓	✓	✓	✓
8. Early Childhood Developmental Screening	In 2024		✓	✓	✓
9. Tobacco, Alcohol or Other Drug Cessation Referrals/Treatments for Adults and/or Caregivers	✓	✓		✓	
10. Weight Assessment, Counseling for Nutrition, Physical Activity	✓	✓		✓	
11. Child and Adolescent Immunization status	✓	✓		✓	✓
12. Emergency Department Visits and Injury Hospitalizations		✓		✓	✓
13. Low Birth Weight			✓	✓	✓

CHC: Community Health Centers; CHIP: Child Health Insurance Program; HEDIS: Health Effectiveness Data and Information Set; MIECHV: Maternal, Infant and Early Childhood Home Visiting;

In 2024 developmental screening performance measures will be required to be reported across four programs --Title V, MIECHV, Medicaid/CHIP and CHCs/FQHCs. This will further align key programs in achieving universal screening and follow up. Each of the three programs (HS/EHS, WIC, CCDF) lacking standardized and publicly reported measures nonetheless also have accountability for promoting the healthy development of young children, including provision of developmental screening, family engagement and collaboration with community partners as do all programs assessed. However, they lack standardized metrics that are publicly reported like other early childhood health programs. Since transparency, reporting, and engagement of early childhood development coalition partners around system performance and improvement is essential, a focus on specifying and using information from performance measures is a critical focus to advance the Engagement in Action Framework purpose and goals.

J. The Engagement in Action Framework Implementation Roadmap

One Big Doable Thing!

The Engagement in Action (EnAct!) Framework implementation roadmap summarized below was informed by best practice systems change and translational science concerning implementation and scaling of innovations in healthcare, government, and community settings. Specifically, the EPIS model (Exploration, Planning, Implementation, Sustainment)⁴¹ was employed throughout the framework design process to identify implementation needs and barriers associated with:

- (1) the overall EnAct! approach, with a focus on family engagement and digital data collection and sharing
- (2) the inner context such as trained providers and practice norms
- (3) the outer context including payment policies and performance incentives.

Barriers and strategies to promote implementation were also identified based on prior research on the approaches included in the EnAct! framework approach. In addition to the EPIS model for implementing change, a “T-shaped scaling model”⁴² for spreading the EnAct! framework for broader social impact is recommended. In this approach, the vertical bar of the T refers to grounding solutions within a community (scaling deep) and the horizontal bar of the T represents spreading the EnAct! framework concepts and resources across communities (scaling wide) while actively translating lessons and resources from areas with deep scaling to support these new communities. This framework supports real-time action while providing a structure for to drive broader uptake and transformation. Other scaling models are also valuable to explore.⁴³

The infrastructure needed to implement change and scale innovation for impact requires investment with a long-term horizon. If done using best practice models like the EPIS model and the T-shaped scaling model, short terms successes and failures can be actively studied to drive improvements. In this way there is *no failure, only learning* and a persistent dedication to a *launch and learn* approach that never wavers from the purpose at hand—Positive Health for All. This requires a deliberate commitment to the growth mindset the Mississippi Thrive! [Early Childhood Development Coalition](#) has already explicitly committed to.

Four implementation actions and twelve associated outcomes comprise the EnAct! framework implementation roadmap. These actions address requirements for state and system leadership and infrastructure to support a strong coalition to drive system change, a culture that values family engagement and child well-being, practice-based implementation learning and technical assistance resources, and policy change. A summary of the implementation roadmap and current progress toward achieving priority outcomes is provided below. This implementation roadmap is meant as a guide, specific steps must be generated by partners and aligned to the commitment, capacity, and resources available to ensure action and progress.

Action 1: Establish a sustainable, cross-system, multi-level state and local leadership capacity.

A statewide leadership team is essential to convene and facilitate collaboration across early childhood health system partners committed to advancing the EnAct! framework goals and approach. The scope of changes envisioned requires a shift from siloed systems focused on illness and risk to one system that is integrated and focused on health for all children and families, prevention, and the promotion of well-being. This shift requires a long-term view and consistent short-term actions using a growth and learning mindset with persistence to continuously move forward.

Similar local area community partners are essential and require support and concrete mechanisms to ensure they are linked to statewide efforts. Three key outcomes are prioritized related to this implementation action area:

Implementation Outcome #1: A cross-sector body has the structure, capacity and influence to sustainably advance state program and policy strategies that promote positive early childhood health for all.

Implementation Outcome #2: State leadership builds an across-state agency infrastructure to coordinate strategies, resources, operations, and performance measures that promote early childhood development.

Implementation Outcome #3: Local community coordinating bodies lead and link with state leadership to drive effective frontline systems change and improvements.

MST is well on the way to achieving each of these outcomes. The recently established Mississippi Thrive! [Early Childhood Development Coalition's](#) mission, aims and focus areas are aligned with the EnAct! framework. Members include key state agencies and leaders who can work together to secure the infrastructure support needed to advance needed implementation, system, and policy changes. In addition, MST leadership has begun a dialogue with state leaders on advancing a governmental cross-agency body to ensure coordination across state early childhood programs. Finally, MST's work has and will continue to include community-based leaders and partnership bodies, like [Excel By 5](#) and county and city programs who are essential to ensure frontline implementation of the EnAct! framework's vision and goals in collaboration with state level coalitions and committees who can act to support local needs.

Action 2: Create a culture of engagement among families, professionals, and system partners.

Family leaders have long advocated for concrete ways to fully partner in shaping services and systems to achieve positive outcomes and meet their needs. It is only in the past decade or so that inclusion of families in organizational advisory bodies has become the norm. While identified as a priority by the Centers for Medicaid and Medicare Services (see Box 2) and numerous national, state, and local groups, engaging families in their own healthcare by

educating them on criteria for good care, activating them to ensure best care is provided, and creating real partnerships with families to share data and decisions is less common. If nothing else, the EnAct! framework seeks to close this gap for families. As emphasized in the National Academy of Sciences’ framework for patient and family engaged care (see Box 3), this means creating a culture of engagement where families are expected to engage and where early childhood professionals and system leaders build the competencies that shift practices. Mississippi’s Families as Allies and other organizations can lead built a culture of engagement.

Three implementation outcomes are prioritized for this implementation action area:

Implementation Outcome #4:

Families are supported, educated, and activated to partner in care.

Implementation Outcome #5:

Families trust and experience authentic power-sharing and respect.

Implementation Outcome #6:

Professional competencies and mechanisms for effective family engagement and partnerships are prioritized.

Box 2: Definition and Goals for Patient and Family Engagement

[Centers for Medicaid and Medicare Services, 2022](#)

“Patients and families are partners in defining, designing, participating in and assessing the care practices and systems that serve them to assure they are respectful of and responsive to individual patient preferences, needs, and values. This collaborative engagement allows patient values to guide all clinical decisions and drives genuine transformation in attitudes, behavior, and practice.”

Goal 1: Partnership with Communities: Identify opportunities to bridge and forge partnerships among providers, persons, and community resources. Actively encourage person and family engagement within the broader context of health and wellbeing across services and communities in which people live.

Goal 2: Values, Preferences & Self-Managing Care: Promote tools and strategies that reflect and capture person and/or family values and preferences and enable them to actively engage in directing and self-managing their care.

Goal 3: Experience & Best Practices: Improve experience and outcomes of care for persons, caregivers, and families by developing criteria for identifying person and family engagement best practices and techniques in the field from CMS programs, measurements, models, and initiatives, that are most ready for widespread scaling and integration.

Box 3: What Is Family Engaged Care? (and why it requires culture change)

National Academy of Medicine’s (NAM’s) Leadership Consortium for a Value & Science-Driven Health System

“Patient and family engaged care (PFEC)...represents a shift in the traditional role patients and families have historically played in their own health care... PFEC also represents an important shift from focusing solely on care processes to aligning those processes to best address the health outcomes that matter to patients. In a culture of PFEC, patients are not merely subjects of their care; they are active participants whose voices are honored.”

Frampton, S. B., S. Guastello, L. Hoy, M. et.al.) 2017. Harnessing Evidence and Experience to Change Culture: A Guiding Framework for Patient and Family Engaged Care. National Academy of Medicine, Washington, DC.

Figure 10: Engagement In Action Framework Key Implementation Actions and Outcomes

The Engagement In Action(EnAct!) Framework Implementation Roadmap for a Statewide Integrated Early Childhood Health System



MST has worked with family and community partners from the start to advance meaningful family engagement whereby families are proactively supported, provided information and reimbursed for their engagement in advisory committees and related efforts. This commitment is further reflected in the design and naming of the EnAct! framework and inclusion of family-driven tools. The priorities set by the ECDC, as informed by MST initiatives and the EnAct! framework, put family engagement front and center.

Many strategies can advance a culture of engagement. Direct and local family engagement campaigns led by trusted community resource brokers, trainings for providers, professionals, and system leaders focused on family engagement competencies, and the application of the “through any door” and “in every encounter” simple rules from the EnAct! framework are examples of what is needed. The importance of family engagement has been described in the scientific literature and evidence-based strategies have been defined, such as the National Academy of Sciences report on creating a culture of engagement referenced in Box 3. Using these evidence-based findings and recommendations will be critical for advancing Mississippi child and family wellbeing.

“Many strategies can advance a culture of engagement. Direct and local family engagement campaigns led by trusted community resource brokers, trainings for providers, professionals, and system leaders focused on family engagement competencies, and the application of the “through any door” and “in every encounter” simple rules from the EnAct! framework are examples of what is needed.”

Action 3: Catalyze, facilitate, study, and spread cross-sector, practice-based implementation.

Research on implementing evidence-based practices for sustainable change has found the following key elements are critical to success: learning communities/communities of practice and “on demand” access to resources, technical assistance and support, the uptake of innovations, recognized and trusted champions, and ongoing research to continually learn and demonstrate impact in local settings.⁴¹⁻⁴³ In addition to the critical implementation leadership discussed in Implementation Outcomes 1-3 above, four implementation outcomes are prioritized to guide specification of specific steps toward the sustainable adoption and impact of the EnAct! framework approach on the front line and across communities:

Implementation Outcome #7: A learning and communications network supports early adopters and spread.

Implementation Outcome #8: Launch and learn demonstrations inform spread and continuous improvement.

Implementation Outcome #9: Implementation resources are built, integrated and accessible.

Implementation Outcome #10: Professionals are trained to implement the science of healthy development and positive and adverse childhood experiences (PACEs) with all children and families.

The Mississippi Thrive! [Early Childhood Development Coalition](#) has integrated the Engagement in Action (EnAct!) Framework approach into each of the nine goals set forth by its two subcommittees and prioritizes establishing the implementation infrastructure and resources require to achieve these implementation outcomes. In addition, an accessible online [toolkit](#) is already available that incorporates information about the framework’s featured resources to support a coalition of active users and learners working toward actionable change and who collaborate to help transform early childhood developmental services. MST has also made important strides in training health, community, education, and social services professionals about the science of early childhood development and practices to both promote positive development and address developmental problems and trauma through its fellowship and ECHO training programs. MST has built the relational infrastructure to advance workforce development going forward.

Action 4: Drive enabling and incentivizing policies and financing strategies critical to success.

A top priority for the Mississippi Thrive! ECDC and partner organizations is to translate the science of healthy development into practice, policy, and culture, with a focus on ensuring universal development screening, surveillance and early intervention and implementing the science of adverse and positive childhood experiences (PACEs). Translation of PACEs science into all settings serving young children and families requires aligning services, strategies, and policies to 1) support nurturing, responsive relationships between children and adults, 2) strengthen caregivers’ core life skills and resilience, 3) reduce sources of stress in the lives of children and families and 4) promote positive neighborhood and community environments. Many policies, financing strategies, and practices do not currently align with these principles or the family- and community-engaged, integrated systems approach. Two final EnAct! framework implementation outcomes are prioritized to address and shift policies to remove barriers to action and change.

Implementation Outcome #11: Policies support processes to facilitate coordination of healthcare and community-based services and resources across organizations and state agency programs.

“Additional solutions such as incentivizing financing for preventive services in health care, reimbursing community-based organizations to conduct developmental screening, placing family navigators within primary care practices, and enabling co-location of services all require policy change.”

Implementation Outcome #12: Health plans, providers and early childhood development professionals are incentivized and financed to enable high quality care and improvement.

Needs and barriers to coordinate services at the service and systems level have been identified by MST and iterative steps have been taken to remove these barriers. However, many essential actions require legislative changes and state leadership. Additional solutions such as incentivizing financing for preventive services in health care, reimbursing community-based organizations to conduct developmental screening, placing family navigators within primary care practices, and enabling co-location of services all require policy change.

A key component of the EnAct! framework included the identification of levers and strategies related to the critical need to work with the Division of Medicaid (DOM), Coordinated Care Organizations (CCOs) and healthcare systems. The DOM has specific requirements to provide comprehensive Early and Periodic Screening, Diagnostic and Treatment (EPSDT) services. Yet, state interpretations of these requirements can leave important services uncovered,

The policy playbook for the EnAct! framework complements the many policy reports in the field that specifically address in more details opportunities to leverage the power of Medicaid, Title V and other state agencies to drive policies and programs that support efforts to optimize the healthy development of children, such as set for the in the EnAct! Framework.

leading to a low priority for improving preventive services. In addition, CCOs are required by law⁴⁴ to provide services aligned with Bright Futures Guidelines and the DOM and other purchasers are charged with enforcing this (e.g., commercial health plan services). As such, providing concrete strategies for

the DOM and other purchasers to use to ensure CCO compliance and innovation in early childhood preventive and developmental health services, appropriate payment, and incentives for healthcare and early intervention providers is essential. To support this policy work, the CAHMI collaborated with MST to develop a policy playbook ([Attachment E](#)) for MST leaders and partners. The playbook specifies legislative and non-legislative approaches to advance policy change, such as creating an Office of Early Childhood and supporting a public-private coalition like the ECDC to provide leadership to ensure state agencies and system partners serving young children and families work together to optimize positive outcomes.

Boxes 4 and 5 lists four categories of policy levers, and high-level examples for each of the twenty prioritized for implementation of the EnAct! framework. More detail can be found in [Attachment E](#). The policy playbook specified for the EnAct! framework was developed for Mississippi and future policy work in this domain will vary across states. Policy work conducted through the EnAct! framework process was also informed by other policy reports in the field that specifically address the opportunities to leverage the power of Medicaid, Title V, and other state agencies to drive policies and programs that support efforts to optimize the healthy development of children.⁴⁵⁻⁴⁷

Box 4: Financial and Non-Financial Levers Medicaid Can Use with Managed Care Health Plans to Advance the Purpose and Goals of the EnAct! framework

Financial levers Medicaid can include in health plan contracts and with providers

- 1. Adequate baseline payment for expected care:**
Ensure per member, per month algorithms Medicaid uses with managed care plans adequately reflect planned payments for utilization of high quality well child care services for all children anchored to Bright Futures Guidelines
- 2. Health plan payment withholds:**
Employ a payment withhold using motivating measures and benchmarks sufficient to compel action as specified in the EnAct! Framework materials.
- 3. Health plan incentive Payments:**
Employ a health plan incentive payment for deploying innovative strategies anchored to the EnAct! Framework goals and approach as outlined in sections 2-4.
- 4. Bundled, enhanced billing codes:**
Streamline and incentivize provider/practice uptake with bundled and enhanced billing codes for use when EnAct! Framework evidence based approaches are used (e.g., one stop billing if the comprehensive pre-visit screening, planning and data sharing Well Visit Planner is used, billing for Family Specialists, etc.)
- 5. Expand sites for service:**
Enable the EnAct! framework “through any door” approach by establishing new service sites that can bill for services when they lead to engage families in comprehensive assessments and provision of health promotion and care coordination (e.g., community and home-based settings for qualified professionals).

Non-Financial levers Medicaid can employ with health plans and providers

- 1. Enable payment innovations:**
Create mechanisms to encourage, enable and monitor impact of innovative, value-based payment mechanisms with providers to drive improvement in preventive and developmental health promotion services and outcomes for young children and families
- 2. Strengthen provider networks:**
Specify requirements for adequacy of the provider network to ensure networks are specified to the needs of young children and families as reflected in the EnAct! Framework. Report network adequacy information to family, provider, community partners.
- 3. Standardize coding:**
Require uniform coding and payment rates across health plans for specific services to streamline provider and system uptake of EnAct! Framework care approach.
- 4. Improvement projects:**
Require health plan Performance Improvement Projects (PIPs) related to the EnAct! Framework goals, approach and strategies, including transparent reporting on actions/results
- 5. Targeted demonstrations:**
Develop Health Services Initiatives pilots (HSIs) with health plans to implement approaches anchored to EnAct! Framework goals and approaches and priority populations.

Source: Child and Adolescent Health Measurement Initiative, Feb. 2023

Source: Child and Adolescent Health Measurement Initiative, Feb. 2023

Box 5: Other Cross Agency and Strategic Levers Medicaid Can Use to Help Implement the EnAct! Framework

Other state levers of critical importance that Medicaid can support

1. Coordinate governance:

State leadership requires coordination across state administrative and public-private sector governing bodies related to Medicaid, the Child Care Development Fund required State Early Childhood Advisory Committee, the Individuals with Disabilities Act Part C/B Early Intervention Interagency Coordination Committee, etc.

2. Leverage Title V:

Encourage optimizing the power of the Title V Block grant, which priorities systems building, coordination of services, family engagement, early childhood development and achievement of MCH outcomes/system performance

3. Establish postpartum coverage:

Work to secure Medicaid postpartum coverage, dramatic improvements in early intervention and home visiting resources and coordination with healthcare and support family income support policies

4. Services and income support program eligibility and access:

Monitor and improve processes to streamline eligibility and access to early intervention, home visiting, early care and education and related state health and income support programs essential to the healthy development and wellbeing of young children and families.

Source: Child and Adolescent Health Measurement Initiative, Feb. 2023

Strategic levers Medicaid can use to promote implementation and improvement

1. State plan amendments:

Secure a State Plan Amendment with the federal government to enable innovative payment and service approaches aligned with the EnAct! Framework

2. State quality strategy:

Strengthen the Medicaid state quality strategy to specifically set measurable goals for the healthy development of children aligned with EnAct! Framework goals and strategies.

3. Family leadership:

Include and support family leaders to serve as Medicaid Beneficiary Advisory Panel/medical advisory committee members to shape Medicaid to meet child and family goals

4. Quality reporting:

Enrich Medicaid contracts with External Quality Review Organization (EQRO) to further assess quality for preventive and developmental services that align with the Affordable Care Act, Section 2713 of the Public Health Service Act, EPSDT and the EnAct! Framework

5. Public reporting:

Ensure public transparency of all health plan PIPs, HSIs and quality ratings to the public, families, health systems, providers and system partners in improvement.

6. Cross-agency collaboration:

Further formalize and monitor Division of Medicaid, Title V, Early Intervention and other agency partnerships and resource flows agreements to optimize early access to and quality of early childhood services and using publicly accessible cross-agency agreements, memoranda of understanding that are reviewed for implementation and improved over time.

7. Administrative improvements:

Identify and publicly report on quality metrics related to administrative processes related to child and family enrollment in Medicaid and access to quality services, as well as clarity about and timeliness of payment for providers

Source: Child and Adolescent Health Measurement Initiative, Feb. 2023

Looking Ahead for Positive Systems Change

Mississippi Thrive! has made groundbreaking strides to lay a foundation for change by bringing system partners together, creating a shared purpose, and specifying ways existing programs across partners might contribute to fulfilling this purpose. Ensuring the enthusiasm, sense of hope, collaboration and commitment are sustained and further developed is the most important asset for success. There is a readiness to act, and the momentum sparked through the MST activities must be harnessed for concrete action.

Ensuring the enthusiasm, sense of hope, collaboration and commitment are sustained and further developed is the most important asset for success. There is a readiness to act, and the momentum sparked through the MST activities must be harnessed for concrete action.

The “One Big Doable Thing!” set forth in the Engagement in Action (EnAct!) Framework to

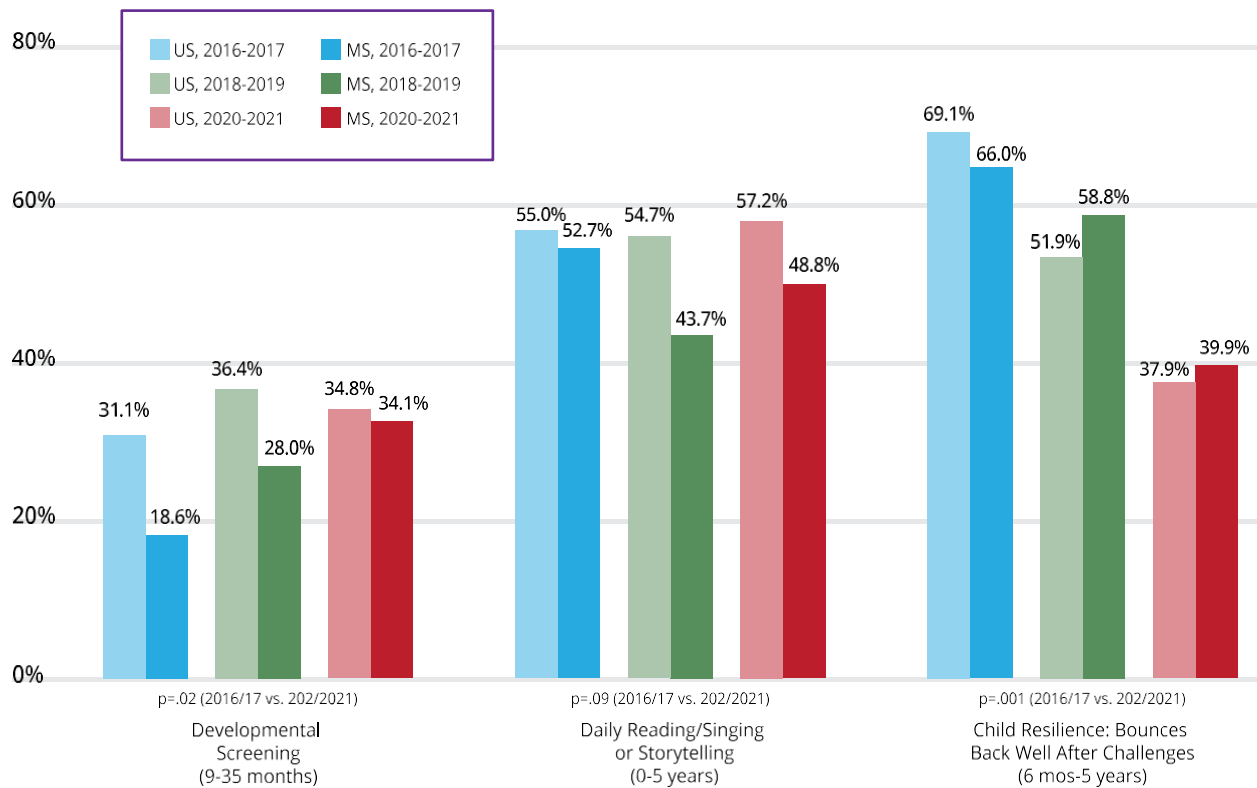
optimize the power of existing early childhood system programs and leverage pediatric primary care well-child care services using a family engaged integrated system approach. This is an achievable aim that will drive measurable improvements in health for all children, child flourishing, school readiness, and family resilience for Mississippi’s young children and families, which is key to create a healthy and just society and the productivity of Mississippi’s population.

MST models strategies for other states to consider, recognizes gaps remain and that improvements upon these gaps most depend on establishing and maintaining transformational partnerships across early childhood systems and with families and communities. Improvements during the five-year MST effort, such as the near doubling of Mississippi’s rate of developmental screening during the project period and the increase in the “daily reading/singing/storytelling” (an indicator of child relational health and cognitive development) between 2018-2021 in which early literacy promotion focused efforts were scaled demonstrates the possibility for change. This progress is an important testimony to the value and impact of systems leadership and development. Yet, as shown in Figure 11, the majority of young children are still not receiving screening and improvements remain to make “daily reading/singing/storytelling” a norm.

Importantly, rates of child resilience have lowered substantially in Mississippi and across the nation (see [Attachment A](#) for a more in-depth data report). While the COVID-19 pandemic certainly contributed to these lowered rates, this also points to the need to advance the EnAct! framework recommended approach in Mississippi and nationally. The data also fuel a sense of urgency as MST efforts continue through the Mississippi Thrive! Early Childhood Development Coalition, with a strong emphasis on translating PACEs science to help children and families develop resilience and flourish, even amid adversity.

Figure 11: Trends in Key Early Childhood Development Measures

Trends in Key Early Childhood Development Measures from the National Survey of Children’s Health:
National and Mississippi Results Across 2016/17, 2018/19 and 2020/21



Source: Child and Adolescent Health Measurement Initiative, Feb. 2023

A commitment to positive health, including the flourishing of all children and families, along with a feasible pathway to move in that direction has been inspired by MST and has strong potential for the nation by leveraging the Engagement In Action Framework.

Quick Links to the Attachments for the Engagement In Action (EnAct!) Framework

[Note: If you have accessed these links before, please refresh your browser to ensure you are viewing the most up-to-date versions of these documents.]

Five Attachments for the Engagement In Action Framework Summary

[Attachment A](#): Mississippi Data Summary for Young Children

[Attachment B](#): Summary of Design Process and Methods

[Attachment C](#): Partners Landscape Scan-Relevance, Roles, and Measures

[Attachment D](#): Ten Partner *Possibility Prototypes*

[Attachment E](#): Policy Playbook for Implementation and Action

[Mississippi Thrive! Toolkit of Featured Resources for Comprehensive, Whole Child and Family Services](#)

[Mississippi Thrive! Early Childhood Development Coalition Charter](#)

[Mississippi Thrive! ECDC Signing Ceremony Two Page Overview](#)

[Mississippi Thrive! ECDC Signing Ceremony Celebration Slides](#)

References

1. Federal Grants. Early Childhood Developmental Health Systems: Implementation in a High Need State. Accessed on Oct 23, 2022 at: <https://www.federalgrants.com/Early-Childhood-Developmental-Health-System-Implementation-in-a-High-Need-State-66479.html>
2. Health Resources and Services Administration. Early Childhood Systems. Accessed 12.22.22 at: <https://mchb.hrsa.gov/programs-impact/early-childhood-systems>
3. COUNCIL ON COMMUNITY PEDIATRICS. Poverty and Child Health in the United States. Pediatrics. 2016 Apr;137(4): e20160339. doi: 10.1542/peds.2016-0339. Epub 2016 Mar 9. PMID: 26962238
4. Child and Adolescent Health Measurement Initiative, Data Resource Center for Child and Adolescent Health. Poverty, Developmental Screening, Low Birth Weight State Rankings, 2016-2017 National Survey of Children's Health. Accessed on Aug. 2, 2022 at: <https://www.childhealthdata.org/browse/survey/allstates?q=6452>; <https://www.childhealthdata.org/browse/survey/allstates?q=7094>; <https://www.childhealthdata.org/browse/survey/allstates?q=6856> <https://www.childhealthdata.org/browse/survey/allstates?q=5285>
5. University of Mississippi Medical Center, L.S. Buttross. Accessed Aug 2, 2022 at: https://www.umc.edu/Provider/Buttross_L_Susan/
6. Mississippi State University, Social Science Research Center, Systems Change Lab. Accessed Aug. 2, 2022 at: <https://scl.ssrc.msstate.edu/>
7. Child and Adolescent Health Measurement Initiative, About, Accessed on Aug 2, 2022 at: <https://cahmi.org/about-us#our-team>
8. American Academy of Pediatrics. Patient Centered Medical Home. Accessed on Oct 12, 2022 at: <https://www.aap.org/en/practice-management/care-delivery-approaches/patient-and-family-centered-medical-home/>
9. Child and Adolescent Health Measurement Initiative. Measuring Medical Home for Children and Youth. Accessed Aug 2, 2022 at: https://www.childhealthdata.org/docs/medical-home/mhmanual_withappendices-updated-12-7-10-pdf
10. Health Resources and Services Administration. Bright Futures. Accessed Aug 13, 2022 at: <https://mchb.hrsa.gov/programs-impact/bright-futures>.
11. American Academy of Pediatrics (2017). Bright Futures Guidelines for Health Supervision of Infants, Children, and Adolescents, 4th Edition. Doi: <https://doi.org/10.1542/9781610020237>.
12. Centers for Medicaid and Medicare Services. Early and Periodic Screening, Diagnosis and Treatment. Access Jan. 3, 2023 at: <https://www.medicare.gov/medicaid/benefits/early-and-periodic-screening-diagnostic-and-treatment/index.html>
13. Child and Adolescent Health Measurement Initiative. Data Resource Center for Child and Adolescent Health Interactive Data Query. Accessed Aug 2, 2022 at: <https://www.childhealthdata.org/browse/survey/allstates?q=5454>
14. Mississippi Early Learning Association. Early Childhood Capital Day. Jan 20, 2023. Accessed on Feb 2, 2023 at: <https://www.msearlylearning.org/early-childhood-capitol-day-sees-business-leaders-early-childhood-professionals-rally-around-shared-policy-agenda/>

15. Medicaid and CHIP Payment Access Commission. MACSTATS Medicaid Data Book. Exhibit 29. December 2022. Accessed Feb 3, 2023 at: https://www.macpac.gov/wp-content/uploads/2022/12/MACSTATS_Dec2022_WEB-508.pdf
16. Garner A, Yogman M; COMMITTEE ON PSYCHOSOCIAL ASPECTS OF CHILD AND FAMILY HEALTH, SECTION ON DEVELOPMENTAL AND BEHAVIORAL PEDIATRICS, COUNCIL ON EARLY CHILDHOOD. Preventing Childhood Toxic Stress: Partnering With Families and Communities to Promote Relational Health. *Pediatrics*. 2021 Aug;148(2):e2021052582. doi: 10.1542/peds.2021-052582. PMID: 34312296
17. Boat TF, Kelleher KJ. Fostering Healthy Mental, Emotional, and Behavioral Development in Child Health Care. *JAMA Pediatr*. 2020;174(8):745–746. doi:10.1001/jamapediatrics.2020.148
18. Bethell C, Jones J, Gombojav N, Linkenbach J, Sege R. Positive Childhood Experiences and Adult Mental and Relational Health in a Statewide Sample: Associations Across Adverse Childhood Experiences Levels [published correction appears in *JAMA Pediatr*. 2019 Sep 30;]. *JAMA Pediatr*. 2019;173(11):e193007. doi:10.1001/jamapediatrics.2019.3007
19. Bethell CD, Garner A, Blackwell, CK et al Social and Relational Health Risks and Common Mental Health Problems Among US Children: The mitigating role of family resilience and connection to promote socio-emotional and school outcomes. *Child and Adol. Psychiatric Clinics of N. A.*, January 25, 2022; 31(1): 45 – 70.
20. Center for the Developing Child. Three principles to improve outcomes for children and families. 2021. Accessed Aug 2, 2022 at: https://harvardcenter.wpenginpowered.com/wp-content/uploads/2017/10/3Principles_Update2021v2.pdf
21. Bethell C, Reuland CH, Halfon N, Schor EL. Measuring the quality of preventive and developmental services for young children: national estimates and patterns of clinicians' performance. *Pediatrics*. 2004 Jun;113(6 Suppl):1973-83. PMID: 15173469.
22. Ghandour R.M., Moore K.A., Murphy K., Bethell C., Jones J.R., Harwood R., Buerlein J., Lu M. School Readiness among U.S. Children: Development of a Pilot Measure. (2019) *Child Indicators Research*, 12 (4) , pp. 1389-1411.
23. Bethell CD, Gombojav N, Whitaker RC. Family Resilience And Connection Promote Flourishing Among US Children, Even Amid Adversity. *Health Aff (Millwood)*. 2019 May;38(5):729-737. doi: 10.1377/hlthaff.2018.05425. PMID: 31059374.
24. Child and Adolescent Health Measurement Initiative. About the National Survey of Children’s Health. Accessed Aug 2, 2022 at: <https://www.childhealthdata.org/learn-about-the-nsch>
25. National Committee for Quality Assurance. Healthcare Effectiveness Data and Information Set (HEDIS) Child and Adolescent Well Care Summary 2022. Accessed Feb 10, 2023 at: <https://www.ncqa.org/hedis/measures/child-and-adolescent-well-care-visits/>
26. Centers for Medicare and Medicaid Services. 2022 Children’s Health Care Quality Core Set of Medicaid and CHIP Measures. Accessed Feb 10, 2023 at: <https://www.medicare.gov/medicaid/quality-of-care/downloads/2022-child-core-set.pdf>
27. Bethell C, Peck C, Schor E. Assessing health system provision of well-child care: The Promoting Healthy Development Survey. *Pediatrics*. 2001 May;107(5):1084-94. doi: 10.1542/peds.107.5.1084. PMID: 11331691.
28. Child and Adolescent Health Measurement Initiative. About the Online Promoting Healthy Development Survey. Accessed Aug 2, 2022 at: <https://onlinephds.org/ProviderInfo.aspx>
29. Reed JE, Howe C, Doyle C, Bell D. Simple rules for evidence translation in complex systems: A qualitative study. *BMC Med*. 2018 Jun 20;16(1):92. doi: 10.1186/s12916-018-1076-9. PMID: 29921274; PMCID: PMC6009041.

30. Child and Adolescent Health Measurement Initiative. HOPE and the New Science of Thriving. Accessed on Aug 2, 2023 at: https://www.cahmi.org/docs/default-source/resources/hope-and-the-new-science-of-thriving---a-summit-to-build-the-field-of-positive-health-and-nurturance.pdf?sfvrsn=19d4a6d8_0
31. Bethell CD, Solloway M, Guinosso S, Hassink S, Srivastav A, Ford D, Simpson L Prioritizing Possibilities for Child and Family Health: An Agenda to Address Adverse Childhood Experiences and Foster the Social and Emotional Roots of Well-being in Pediatrics. *Academic Pediatrics* (2017). <https://pubmed.ncbi.nlm.nih.gov/28865659/>
32. Health Resources and Services Administration. Bright Futures. Accessed on August 2, 2022 at: <https://mchb.hrsa.gov/programs-impact/bright-futures>
33. Bethell, CD, Kennedy, S, Martinez-Vidal, E, Simpson, L (November 2018). Payment for Progress: Investing to Catalyze Child and Family Well-Being Using Personalized and Integrated Strategies to Address Social and Emotional Determinants of Health. *AcademyHealth*, Washington, DC. Accessed at: https://academyhealth.org/sites/default/files/payment_for_progress_fullreport_nov2018.pdf
34. Child and Adolescent Health Measurement Initiative. Summary of the Maternal and Child Health Measurement Research Network April 2020 Partners for Whole Child Preventive and Developmental Services National Summit Meeting. Accessed 2.15..23 at: https://cahmi.org/docs/default-source/default-document-library/cahmi-mch-mrn-coe-summit-meeting-summary.pdf?sfvrsn=ede0aa1e_0
35. Cornell, E., Strengthening Children’s Social-Emotional Well-Being and Ensuring a Parent-Led Agenda: Transforming the Pediatric Well-Child Visit through Technology Oct. 2019. Access on 6.2.22 at: https://helpmefrownational.org/wp-content/uploads/2021/11/Pediatrics-Supporting-Parents_Phase-1-Full-Final-Report.pdf
36. Child and Adolescent Health Measurement Initiative, Cycle of Engagement. Access on 6.2.22 at www.cycleofengagement.org
37. Daelmans B, Manji SA, Raina N. Nurturing Care for Early Childhood Development: Global Perspective and Guidance. *Indian Pediatr.* 2021 Nov 15;58 Suppl 1:S11-S15. PMID: 34687182.
38. Minkovitz CS, Strobino D, Mistry KB, Scharfstein DO, Grason H, Hou W, Ialongo N, Guyer B. Healthy Steps for Young Children: sustained results at 5.5 years. *Pediatrics.* 2007 Sep;120(3):e658-68. doi: 10.1542/peds.2006-1205. PMID: 17766506.
39. Arbour M, Fico P, Floyd B, Morton S, Hampton P, Murphy Sims J, Atwood S, Sege R. Sustaining and scaling a clinic-based approach to address health-related social needs. *Front Health Serv.* 2023 Feb 17;3:1040992. doi: 10.3389/frhs.2023.1040992. PMID: 36926501; PMCID: PMC10012656.
40. Sanders J, Channon S, Gobat N, Bennert K, Addison K, Robling M. Implementation of the Family Nurse Partnership programme in England: experiences of key health professionals explored through trial parallel process evaluation. *BMC Nurs.* 2019 Apr 2;18:13. doi: 10.1186/s12912-019-0338-y. PMID: 30976196; PMCID: PMC6444391.
41. Moullin JC, Dickson KS, Stadnick NA, Rabin B, Aarons GA. Systematic review of the Exploration, Preparation, Implementation, Sustainment (EPIS) framework. *Implement Sci.* 2019 Jan 5;14(1):1. doi: 10.1186/s13012-018-0842-6. PMID: 30611302; PMCID: PMC6321673.
42. Nardini, G., Bublitz, M. G., Butler, C., Croom-Raley, S., Edson Escalas, J., Hansen, J., & Peracchio, L. A. (2022). Scaling Social Impact: Marketing to Grow Nonprofit Solutions. *Journal of Public Policy & Marketing*, 41(3), 254–276. <https://doi.org/10.1177/07439156221087997>
43. Weber P, Birkholz L, Kohler S, Helsper N, Dippon L, Ruetten A, Pfeifer K, Semrau J. Development of a Framework for Scaling Up Community-Based Health Promotion: A Best Fit Framework

Synthesis. Int J Environ Res Public Health. 2022 Apr 14;19(8):4773. doi: 10.3390/ijerph19084773. PMID: 35457644; PMCID: PMC9032469.

44. Federal Register. Coverage of Certain Preventive Services Under the Affordable Care Act. Accessed 12.3.22 at: <https://www.federalregister.gov/documents/2015/07/14/2015-17076/coverage-of-certain-preventive-services-under-the-affordable-care-act>
45. Johnson K, Bruner C. Medicaid managed care: Transformation to accelerate use of high performing medical homes for young children. InCK Marks Working Paper Series. No. 5 InCK Marks Initiative. January 2021. <https://www.inckmarks.org/docs/newresources/InCKWP5MedicaidManagedCare.pdf>
46. Johnson, K., Bruner, C. 2018. A Sourcebook on Medicaid's Role in Early Childhood. Accessed April 15, 2022 at: [https://www.inckmarks.org/docs/pdfs_for Medicaid and EPSDT page/SourcebookMEDICAIDYOUNGCHILDRENALL.pdf](https://www.inckmarks.org/docs/pdfs_for_Medicaid_and_EPSDT_page/SourcebookMEDICAIDYOUNGCHILDRENALL.pdf)
47. Johnson, K, Willis, D. Guide to Leveraging Opportunities Between Medicaid and Title V for Promoting Social and Emotional Development, Center for the Study of Social Policy, Dec, 2020. Accessed April 15, 2022 at: <https://cssp.org/wp-content/uploads/2020/12/CSSP-Leveraging-TitleV-FULL-REPORT.pdf>
48. Administration for Children and Families and the Department of Education. Federal Letter on the Social, Emotional, Development and Mental Health of Children. June 14, 2022. <https://www.acf.hhs.gov/ecl/policy-guidance/dear-colleague-social-emotional-development-and-mental-health>
49. Administration for Children and Families, US Department of Health and Human Services, Office of Head Start, The Well Visit Planner for Families. Accessed Aug. 15, 2022 at: <https://eclkc.ohs.acf.hhs.gov/physical-health/article/well-visit-planner-families>